



BEVERAGE-AIR

3779 Champion Blvd., Winston-Salem, NC 27105
1-888-845-9800 Fax# 1-336-245-6453
<http://www.Beverage-Air.com>

CUSTOMER'S CHOICE FOR A HOT KITCHEN
Tested & Certified to Ambient Class of 100°F

3 Year Parts/Labor Warranty Additional 2 Year Compressor Warranty

UCFD SERIES—29" DEPTH

Versatile, compact (29" depth) models for under the counter refrigerated storage of food products. Working height is 34 1/2".

CABINET CONSTRUCTION

Heavy duty construction includes exterior stainless steel on front, sides, door(s) and grille. Cabinet back and bottom are galvanized steel. Interior liner is made of corrosion resistant aluminum. Interior thermometer is standard.

In cabinets with doors and drawers, doors are mounted to face of cabinet on cartridge-style hinges permitting them to self close under their own weight. Hinges also allow doors to stay open 120° and permit easy door removal for service and cleaning if required. A plug-in type vinyl magnetic gasket is attached to each door for positive seal.

Cabinet insulation is CFC and HCFC-free foamed-in-place polyurethane of two-inch minimum thickness. 6" high casters are standard, 2 include brakes.

DRAWER CONSTRUCTION

Drawer frames are constructed of heavy-duty stainless steel and are supported on heavy-duty telescoping drawer slides for maximum support of stored food products. Slides have locking mechanism to prevent from drawers being pulled off of cabinets. Upper pull-out drawers accommodate 6" deep pans. Lower pull-out drawers accommodate two 4" deep pans. Heavy-duty pan divider supports are supplied. Foodservice pans for drawers are not included. Snap-type vinyl magnetic gasket is attached to each drawer for positive seal. Drawers extend 23" (when opened).

REFRIGERATION

Refrigeration system utilizes R404a refrigerant governed by a capillary tube system. Automatic (non-electric) condensate evaporator is provided. Interior forced-air system with high humidity evaporator coils, provides the ideal environment for food preservation.

ELECTRICAL

Units wired at factory and ready for connection to a 115/60/1 phase, 15 amp dedicated outlet. 8' long cord and plug set included.

ELECTRICAL CONNECTION

Units pre-wired at factory and include 8' long cord and plug



Item No. _____
Quantity _____

**UNDERCOUNTER
FREEZERS
WITH DRAWERS
UCFD 29" DEPTH SERIES**

**MODELS:
UCFD27A
UCFD48A
UCFD60A**



UCFD27A-2



UCFD48A-2

Available From:



*Note: Not all markings may apply to all model variations.

Model Specified _____

Store# _____

Location _____

Quantity _____



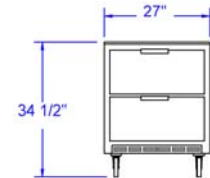
BEVERAGE-AIR

PLAN VIEWS

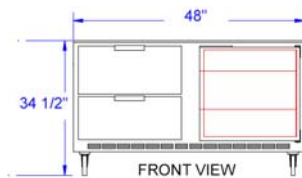
Undercounter Freezers With Drawers

Models: UCFD27A, UCFD48A, UCFD60A

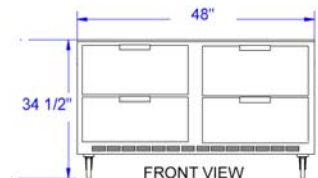
MODEL	UCFD27A-2	UCFD48A-2	UCFD48A-4	UCFD60A-2	UCFD60A-4
EXTERNAL DIMENSIONAL DATA					
Length Overall (inches)	27"	48"	48"	60"	60"
Length Overall (mm)	686	1219	1219	1524	1524
Depth Overall (inches)	29 1/4"	29 1/4"	29 1/4"	29 1/4"	29 1/4"
Depth Overall (mm)	743	743	743	743	743
Height Overall—(inches)	34 1/2"	34 1/2"	34 1/2"	34 1/2"	34 1/2"
Height Overall—(mm)	876	876	876	876	876
Number of doors	-	1	-	1	-
Number of drawers	2	2	4	2	4
Drawer Extension (when opened)	23"	23"	23"	23"	23"
INTERNAL DIMENSIONAL DATA					
NET Capacity (cubic ft.)	7.3	13.9	13.9	17.1	17.1
NET Capacity (Liters)	207	394	394	484	484
Internal Length Overall (inches)	23"	44"	44"	55 7/8"	55 7/8"
Internal Length Overall (mm)	584	1118	1118	1419	1419
Internal Depth Overall (inches)	19"	19"	19"	19"	19"
Internal Depth Overall (mm)	483	483	483	483	483
Internal Height Overall—(inches)	23"	23"	23"	23"	23"
Internal Height Overall—(mm)	584	584	584	584	584
Number of shelves	-	2	-	2	-
ELECTRICAL DATA					
Full Load Amperes 115/60/1	4	3.3	3.3	8.2	8.2
REFRIGERATION DATA					
Horsepower	1/6	1/5	1/5	1/4	1/4
WEIGHT DATA					
Gross Weight (Crated lbs)	157	259	278	312	235
Gross Weight (Crated kg)	71	117	126	141	107



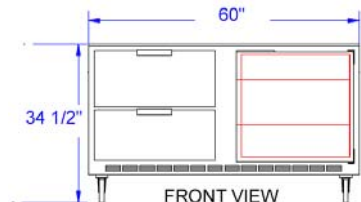
FRONT VIEW
UCFD27A-2



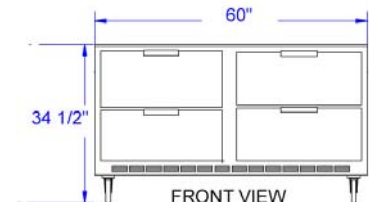
FRONT VIEW
UCFD48A-2



FRONT VIEW
UCFD48A-4



FRONT VIEW
UCFD60A-2

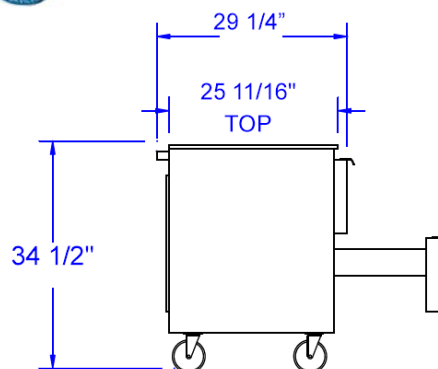


FRONT VIEW
UCFD60A-4



Note: Not all markings may apply to all model variations.

*N/A: Not available at time of printing.



END VIEW

BEVERAGE-AIR® CORPORATION

3779 Champion Blvd. • Winston-Salem, NC 27105 USA • (336) 245-6400 • Fax (336) 245-6453 • (888) 845-9800 • www.beverage-air.com

Specifications are subject to change without prior notice. 07/16