



BEVERAGE-AIR

3779 Champion Blvd., Winston-Salem, NC 27105
1-888-845-9800 Fax# 1-336-245-6453
<http://www.Beverage-Air.com>

CUSTOMER'S CHOICE FOR A HOT KITCHEN
Tested & Certified to Ambient Class of 100°F

3 Year Parts/Labor Warranty
Additional 2 Year Compressor Warranty

UCR-SERIES UNDERCOUNTER UNITS

Versatile, compact (29" deep) models for undercounter and worktop applications for refrigerated storage of food product. Height is 34-1/2".

CABINET CONSTRUCTION

Heavy duty construction includes exterior stainless steel on front, sides, door(s) and grille. Cabinet back and bottom are galvanized steel. Interior liner is made of corrosion resistant aluminum. Interior thermometer is standard.

Cabinets are insulated with 2" thick foamed-in-place polyurethane insulation. Sub-top insulated with 1-1/2" foamed-in-place polyurethane insulation. Doors are mounted to cabinet on self-closing, cartridge style hinges with 120° stay open feature. Doors are equipped with a snap-in-place vinyl magnetic gasket for positive seal. Convenient, double pull style door handle is made of black anodized aluminum. 6" high casters are standard, 2 include brakes. An 8' cord set is provided with 115 volt models. Cabinet interior standard with 2 steel wire epoxy coated shelves per section. Interior light with manual switch is provided with glass door models.

REFRIGERATION

Refrigeration system utilizes R134a refrigerant governed by a capillary tube system. Automatic (non-electric) condensate evaporator is provided. Interior forced-air system with high humidity evaporator coils, provides the ideal environment for food preservation.

ELECTRICAL

Units wired at factory and ready for connection to a 115/60/1 phase, 15 amp dedicated outlet. 8' long cord and plug set included.

SPECIAL FEATURES

- Cartridge style door hinges provides positive seal & eliminates door sagging issues (excludes glass door and some special units).
- Optional 6" legs or 3" casters available

Item No. _____
Quantity _____

**29" DEPTH
UNDERCOUNTER
REFRIGERATOR
FOOD PREPARATION SERIES**

**MODELS:
UCR27A
UCR48A
UCR60A
UCR72A**



UCR27



UCR48

ELECTRICAL CONNECTION

Units pre-wired at factory and include 8' long cord and plug set.



115/60/1
NEMA-5-15P

Available From:



Model Specified _____

Store# _____

Location _____

Quantity _____



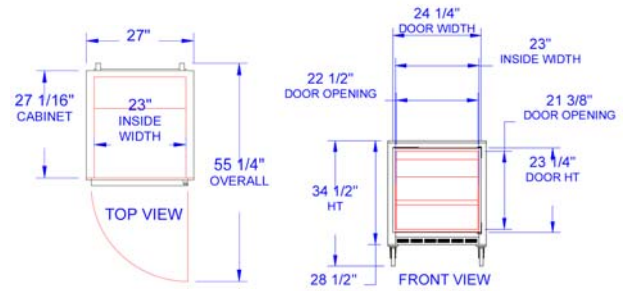
BEVERAGE-AIR

Standard Undercounter Refrigerator Cabinet

Models: UCR27A / UCR48A / UCR60A / UCR72A

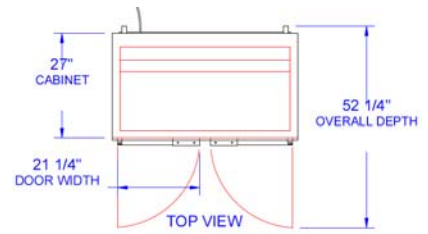
| MODEL | UCR27A | UCR48A | UCR60A | UCR72A |
|--|-------------------|-------------------|-------------------|-------------------|
| EXTERNAL DIMENSIONAL DATA | | | | |
| Length Overall (inches) | 27" | 48" | 60" | 72" |
| Length Overall (mm) | 686 | 1219 | 1524 | 1829 |
| Depth Overall (inches) - Less handle | 29 1/4" | 29 1/4" | 29 1/4" | 29 1/4" |
| Depth Overall (mm) - Less handle | 743 | 743 | 743 | 743 |
| Height Overall— on 6" casters (inches) | 34 1/2" | 34 1/2" | 34 1/2" | 34 1/2" |
| Height Overall—on 6" casters (mm) | 876 | 876 | 876 | 876 |
| Depth with Door Open 90 ° | 51 5/8" | 50 5/8" | 55 1/4" | 52 |
| Clear Door Opening (inches) | 22 1/2" x 21 1/2" | 19 1/2" x 21 1/2" | 22 1/2" x 21 1/2" | 19 1/2" x 21 1/2" |
| Number of doors | 1 | 2 | 2 | 3 |
| INTERNAL DIMENSIONAL DATA | | | | |
| NET Capacity (cubic ft.) | 7.3 | 13.9 | 17.1 | 21.5 |
| NET Capacity (Liters) | 207 | 394 | 484 | 609 |
| Internal Length Overall (inches) | 23" | 44" | 56" | 68" |
| Internal Length Overall (mm) | 584 | 1118 | 1422 | 1727 |
| Internal Depth Overall (inches) | 18" | 17" | 19 3/4" | 19 3/4" |
| Internal Depth Overall (mm) | 457 | 432 | 502 | 502 |
| Internal Height Overall (inches) | 23" | 23" | 23" | 22 3/4" |
| Internal Height Overall (mm) | 584 | 584 | 584 | 578 |
| Number of shelves | 2 | 4 | 4 | 6 |
| ELECTRICAL DATA | | | | |
| Full Load Amperes 115/60/1 | 4.0 | 3.3 | 8.2 | 8.2 |
| ENERGY CONSUMPTION (KWH) | 2.23 | 2.62 | 3.5 | 4.1 |
| REFRIGERATION DATA | | | | |
| Horsepower | 1/6 | 1/5 | 1/4 | 1/4 |
| WEIGHT DATA | | | | |
| Gross Weight (Crated lbs) | 158 | 225 | 266 | 305 |
| Gross Weight (Crated kg) | 72 | 102 | 121 | 138 |

PLAN VIEWS

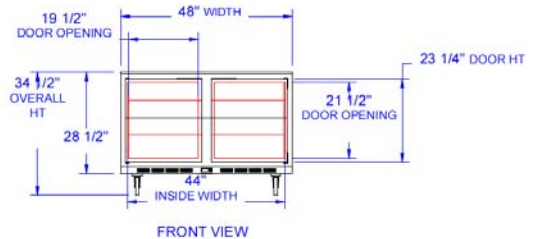


UCR27 TOP

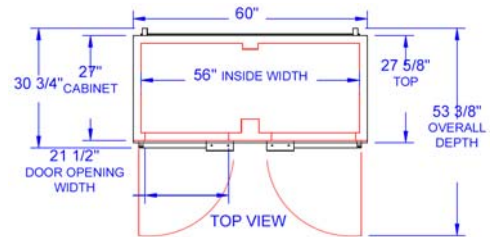
UCR27 FRONT



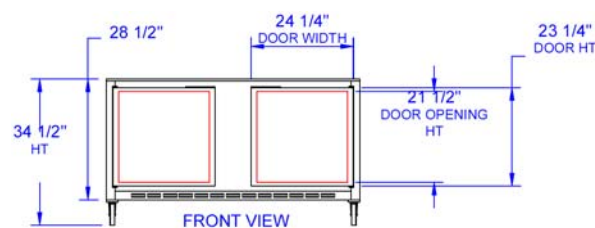
UCR48 TOP



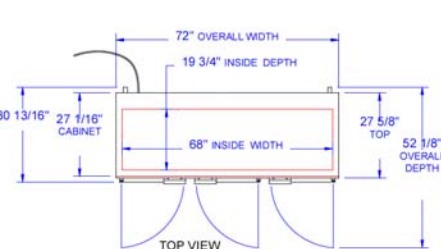
UCR48 FRONT



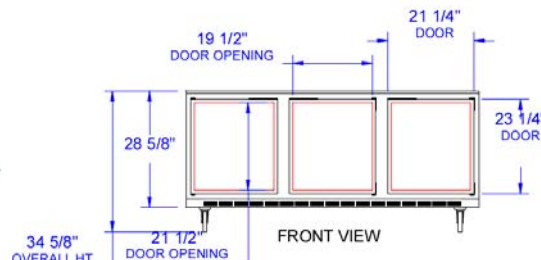
UCR60 TOP



UCR60 FRONT



UCR72 TOP



UCR72 FRONT



BEVERAGE-AIR® CORPORATION

3779 Champion Blvd. • Winston-Salem, NC 27105 USA • (336) 245-6400 • Fax (336) 245-6453 • (888) 845-9800 • www.beverage-air.com

Specifications are subject to change without prior notice. 04/14