



## BEVERAGE-AIR

3779 Champion Blvd., Winston-Salem, NC 27105  
1-888-845-9800 Fax# 1-336-245-6453  
<http://www.Beverage-Air.com>

**CUSTOMER'S CHOICE FOR A HOT KITCHEN**  
**Tested & Certified to Ambient Class of 100°F**

### 3 Year Parts/Labor Warranty Additional 2 Year Compressor Warranty

#### UCR/UCF—SERIES UNDERCOUNTER UNITS

Select from 4 standard sizes in widths of 46" (1 door), 67" (2 door), 93" (3 door), and 119" (4 door). Overall height is 34 1/2" with units installed on 6 inch casters (2 with brakes).

#### CABINET CONSTRUCTION

Construction features include stainless steel exteriors and aluminum interiors. Cabinet back and bottom are galvanized steel. Interiors accommodate sheet pans and hotel pans. Pan slides are optionally available.

Cabinets are insulated with 2" thick foamed-in-place polyurethane insulation. Doors are mounted to cabinet on self-closing, cartridge style hinges with 120° stay open feature. Doors are equipped with a snap-in-place vinyl magnetic gaskets for positive seal. Convenient, double pull style door handle is made of black anodized aluminum. 6" high casters are standard, 2 include brakes. An 8' cord set is provided with 115 volt models. Cabinet interior standard with 2 steel wire epoxy coated shelves per section. Interior light with manual switch is provided with glass door models.

#### REFRIGERATION

Balanced refrigeration systems provide high humidity storage of product at 35° to 38°. One size undercounter freezer UCF67 holds product below zero and is equipped with time activated, temperature terminated, electric defrosting.

Refrigerants include CFC free R134a in refrigerators and 404A in freezers to comply with all environmental standards.

#### ELECTRICAL

Units wired at factory and ready for connection to a 115/60/1 phase, 15 amp dedicated outlet. 8' long cord and plug set included.

#### SPECIAL FEATURES

- Cartridge style door hinges provides positive seal & eliminates door sagging issues (excludes glass door and some special units).
- Optional 6" legs or 3" casters available

Item No. \_\_\_\_\_  
Quantity \_\_\_\_\_

### 32" DEPTH UNDERCOUNTER REFRIGERATORS AND FREEZER FOOD PREPARATION SERIES

**MODELS:**  
UCR41A  
UCR46A  
UCR/UCF67A  
UCR93A  
UCR119A



UCR/UCF67



UCR93

#### ELECTRICAL CONNECTION

Units pre-wired at factory and include 8' long cord and plug set.



115/60/1  
NEMA-5-15P

Available From:



Model Specified \_\_\_\_\_

Store# \_\_\_\_\_

Location \_\_\_\_\_

Quantity \_\_\_\_\_



**BEVERAGE-AIR**

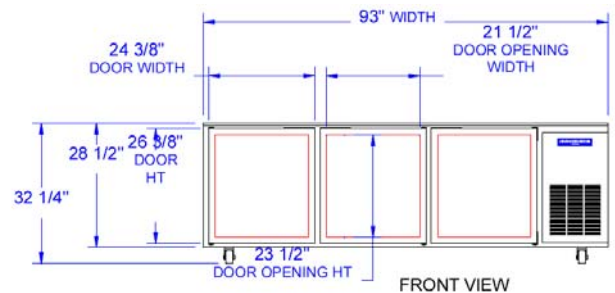
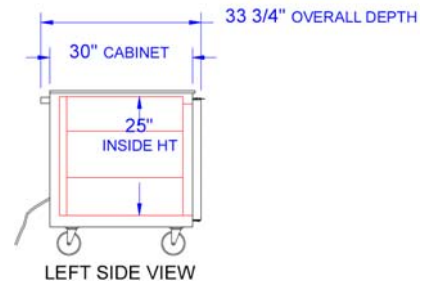
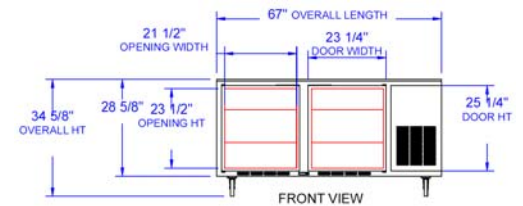
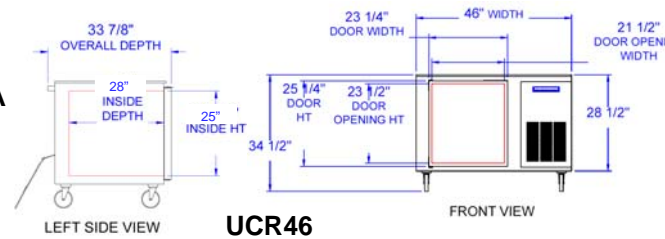
## Undercounter Refrigerators and Freezer 32" Base Model Series

Models: UCR41A / UCR46A / UCR67A / UCR93A / UCR119A / UCF67A

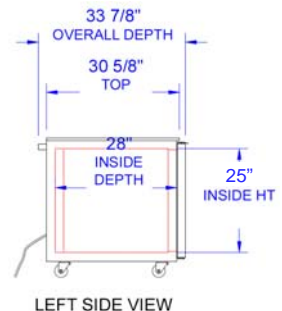
MODEL	UCR41A	UCR46A	UCR67A	UCF67A	UCR93A	UCR119
<b>EXTERNAL DIMENSIONAL DATA</b>						
Length Overall (inches)	41"	46"	67"	67"	93"	119"
Length Overall (mm)	1041	1168	1702	1702	2362	3023
Depth Overall (inches) - Less handle	32"	32"	32"	32"	32"	32"
Depth Overall (mm) - Less handle	813	813	813	813	813	813
Height Overall—on 6" casters (inches)	34 1/2"	34 1/2"	34 1/2"	34 1/2"	34 1/2"	34 1/2"
Height Overall—on 6" casters (mm)	876	876	876	876	876	876
Depth with Door Open 90 °	55 3/8"	55 3/8"	55 7/8"	57"	57"	55 7/8"
Clear Door Opening (inches)	21 1/2" x 23	21 1/2" x 23 1/2"	23 1/3" x 25 1/4"	21 1/2" x 23 1/2"	21 1/2" x 23 1/2"	21 1/2" x 23 1/2"
Number of doors	1	1	2	2	3	4
<b>INTERNAL DIMENSIONAL DATA</b>						
NET Capacity (cubic ft.)	14.75	16.2	19.21	19.21	29.7	40.5
NET Capacity (Liters)	418	458	544	544	841	1147
Internal Length Overall (inches)	19"	22"	48"	48"	74"	100 1/8"
Internal Length Overall (mm)	483	559	1219	1219	1880	2543
Internal Depth Overall (inches)	28"	28"	28"	28"	28"	28"
Internal Depth Overall (mm)	711	711	711	711	711	711
Internal Height Overall (inches)	25"	25"	25"	25"	25"	25"
Internal Height Overall (mm)	635	635	635	635	610	641
Number of shelves	2	2	4	4	6	8
<b>ELECTRICAL DATA</b>						
Full Load Amperes 115/60/1	6.3	6.3	6.3	8.6	8.6	8.6
<b>ENERGY CONSUMPTION (KWH)</b>						
	n/a	2.81	2.56	15.3	3.49	3.91
<b>REFRIGERATION DATA</b>						
Horsepower	1/4	1/4	1/4	3/4	1/3	1/3
<b>WEIGHT DATA</b>						
Gross Weight (Crated lbs)	257	278	323	397	450	563
Gross Weight (Crated kg)	116	126	146	180	204	255



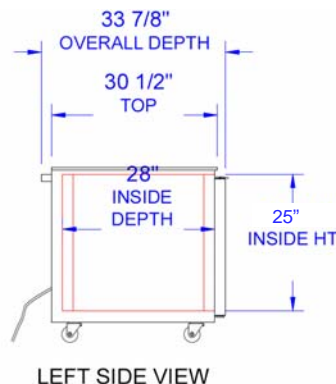
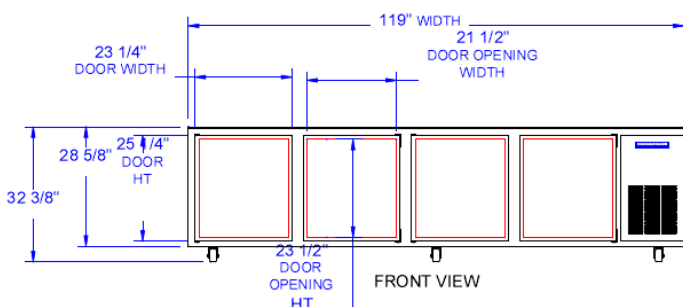
## PLAN VIEWS



## UCR93



## UCR119



## BEVERAGE-AIR® CORPORATION

3779 Champion Blvd. • Winston-Salem, NC 27105 USA • (336) 245-6400 • Fax (336) 245-6453 • (888) 845-9800 • [www.beverage-air.com](http://www.beverage-air.com)

Specifications are subject to change without prior notice. 11/13