



460 Southport Commerce Blvd.  
Spartanburg SC 29306  
Phone: 864-574-6004  
Fax: 864-574-6005  
www.ojedausa.com  
sales@ojedausa.com

Project: \_\_\_\_\_  
Model #: \_\_\_\_\_  
Item #: \_\_\_\_\_ Qty: \_\_\_\_\_  
Approval: \_\_\_\_\_

## OPEN AIR MERCHANDISER

## ALPA 120



### STEEL CONSTRUCTION

Robust steel construction minimizes the use of plastic materials resulting in an environmental friendly design.

### CARE FREE CONDENSER

The finless spiral condenser design prevents dust/dirt buildup allowing maximum long term efficiency.

### ELECTRONIC CONTROL

The intelligent temperature control is programmed to ensure the correct operation of the equipment and maintain products at an optimum temperature.

### LED LIGHTING

LED lighting lasts longer than fluorescent lighting, it reducing energy consumption, which generates minimal heat. All of this makes LED lighting great for the environment.

### HOT GAS EVAPORATION

Hot gas heated drain pan for condensate evaporation that eliminates the need of floor drains or electric heaters.

### NIGHT CURTAIN

30% less energy consumption when closed.

### OPERATION TEMPERATURE

35°F-40°F (1.6°C-4.4°C)

### CUSTOM GRAPHICS

Standard color: grey.

Dimensions			Crated Dimensions			Shelves	HP	Voltage	NEMA config	Amps	Crated Weight		
	W	D	H		W	D	H	5	2x1⅓	120	5-20P	16	652 lbs
(in)	51.5	31.7	78.8	(in)	56.3	36.3	82.7	Net Capacity (cf): 23.87				Energy Consumption: 18.5 kw-hr/day	
(mm)	1308	805	2000	(mm)	1430	920	2100						

\*Inches rounded up one decimal place \*Specifications may change without notification



## CABINET CONSTRUCTION

- High-density, CFC-Free, polyurethane insulation
- Large low-E double pane tempered thermal glass side panels
- Manual retractable night curtain for increased energy savings
- Exterior: Galvanized metal cabinet with powder coated painted surface
- Interior: Easy to clean pre-painted steel

## SHELVING

- Adjustable, dual-position shelves with tag molding.

## LIGHTING

- LED horizontal and vertical lighting

## OPERATING CONDITIONS

- Open Air models should not be installed in any area where the air curtain will be disrupted. This includes placement near any HVAC vent, open doorway, or fan.
- The unit is rated for an environment where temperatures remain below 75°F and humidity does not exceed 55%
- Areas with direct sunlight should also be avoided

## REFRIGERATION

- Maintenance free condenser
- Automatic defrost cycle
- Hot gas heated pan for condensate evaporation
- Electronic temperature control
- Easy to reach components for maintenance
- R-134A refrigerant

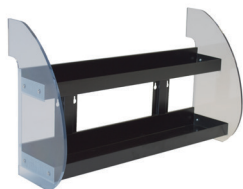
## ACCESSORIES

- 6" stainless steel legs
- Casters
- Lockable security cage
- Clear cool curtain
- Peg bar system for hanging product
- Shelf product retainers
- Custom graphics
- Saddle bag merchandisers
- Front product merchandiser

## WARRANTY

- 2 year parts and labor warranty
- 5 year compressor

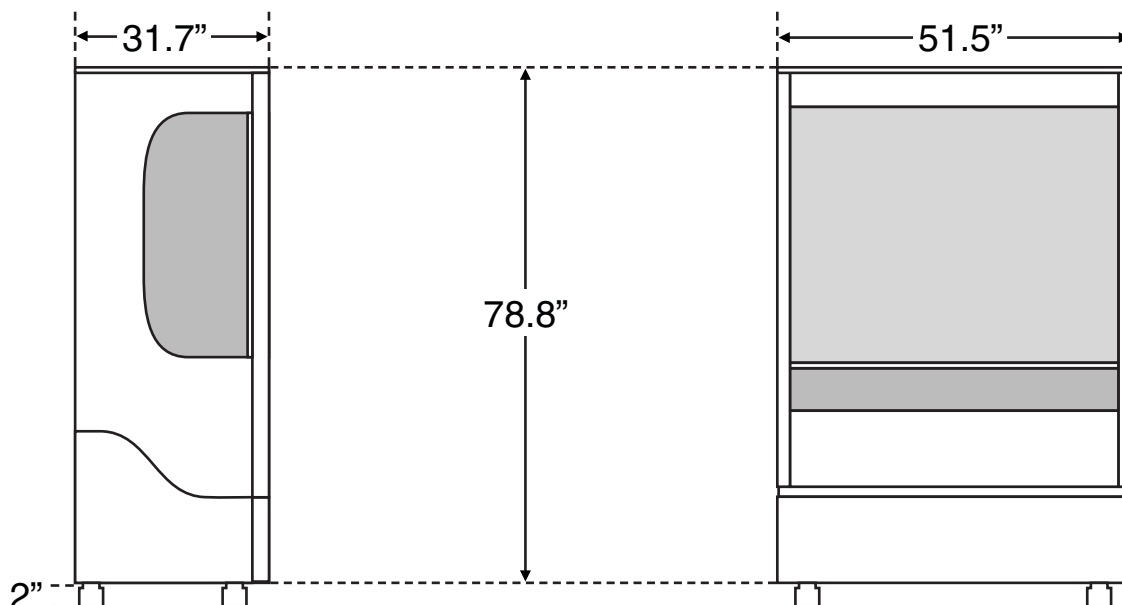
## FRONT PRODUCT DISPLAY



## SIDE PRODUCT DISPLAY



## LOCKABLE SECURITY CAGE



\*Specifics may change without notification

