



# DYNASTY™

Walk-in Coolers and Freezers



Providing walk-in refrigeration with the industry's longest lasting and most energy efficient insulation!

INNOVATION AND EXCELLENCE SINCE 1985

## DYNASTY WALK-IN STANDARD FEATURES

Listening to our customers is what we do best. They have inspired us, our engineering and manufacturing teams to design, refine and build walk-ins that meet their highest expectations, while delivering them in a competitive timeframe. Our panel raw materials and hardware components are of the finest quality in the industry. We can build a walk-in refrigeration system that meets the most demanding customer requirements, and provide piece-of-mind that your investment will last a lifetime.

### PANELS AND INSULATION

#### PANEL CONSTRUCTION



##### Modular Panel Construction

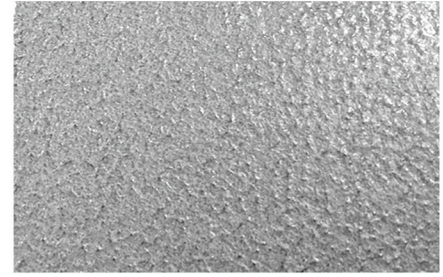
Dynasty modular wall, floor and ceiling panels are fabricated in our plant using state-of-the-art robotic manufacturing and assembly processes; for precise fit, easy assembly and long life. Dynasty panels are 4" thick and manufactured with 100% uniform AK-XPS4 rigid foam. That insulation is permanently bonded to primed metal surfaces, to form a non-deteriorating structurally-rigid panel.

Dynasty panel assembly is accomplished with a time-tested, corrosion resistant cam action locking system, and a factory installed NSF compliant compression gasket, to form rigid, airtight joints.



##### Airtight Joints

#### STANDARD PANEL FINISH



##### Acrylume® Stucco Embossed Finish

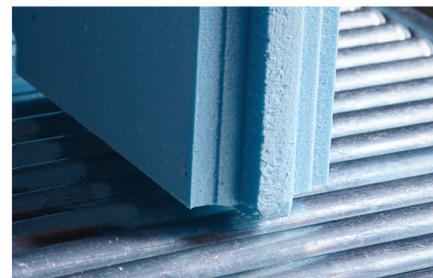
Dynasty wall and ceiling panel interiors and exteriors are laminated with 26-gauge zinc-aluminum (Acrylume®) coated steel, which is stucco embossed and coated with corrosion resistant acrylic paint.

#### INSULATION PERFORMANCE CHARACTERISTICS

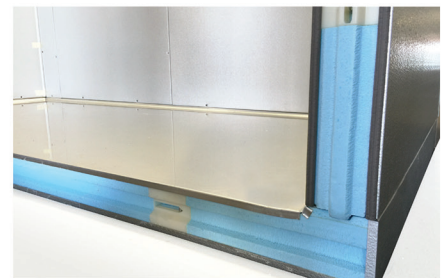


##### Long-Life Extruded Polystyrene Foam

AK-XPS4 rigid foam is a closed cell, void-free hydrophobic (water-resistant) material that maintains the highest possible R-value over time, to ensure long term energy efficiency. AK-XPS4 meets and exceeds the EISA Energy Independence & Security Act of 2007 with R-29 value for Coolers and R-32 value for Freezers. Our AK-XPS4 insulation is backed by The Dow Chemical Company with a 50 year thermal warranty.



#### STANDARD FLOOR



##### Strong Floor Construction

Dynasty floor panels are also 4" thick and manufactured using heavy gauge smooth aluminum, rated to support 600 pounds per-square-foot of uniformly distributed floor load. They include a 1/2"-radius cove along the interior perimeter, to make cleaning easier. Floorless walk-ins are provided with NSF approved floor screeds, to sit flat on an existing leveled floor.



## MORE DYNASTY WALK-IN STANDARD FEATURES

The Dynasty walk-in standard height is 7'-7" with floor; or 7'-2 1/4" without a floor. Custom panels are available in 1" increments to meet customer space and floorplan requirements. The AmeriKooler and Bohn refrigeration system lineup includes: Indoor and Outdoor Remote and Self-contained packages, as well as a variety of energy monitoring control systems. All are backed by reliable service support from Heatcraft Refrigeration Products.

### STANDARD DOOR CONSTRUCTION

#### FLUSH DOOR HARDWARE



Spring Assisted Hinges



Door Closer



Keyed Locking Door Handle

Standard door sizes are: 36", 30" or 26" wide, all with a 76" high clear opening. Doors are constructed with 4" thick AK-XPS4 rigid foam insulation and finished with 26-gauge zinc-aluminum (Acrylume®) coated steel, which is stucco embossed and coated with corrosion resistant acrylic paint.

Each door includes: two heavy duty, super cam-rise spring-assisted hinges; a heavy pull handle with key lock and inside safety release; and a door closer is provided for extra positive smooth closing. To ensure a positive seal, the door includes a three sided magnetic gasket and a flexible double wiper at the bottom edge of the door.

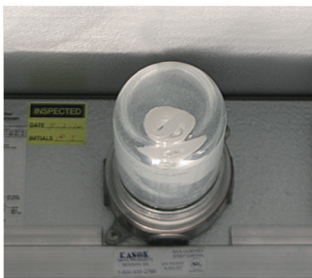
#### INSTALLATION KIT



Fast & Easy Assembly

We designed our panels so that job-site installation is fast and easy. All walk-ins are shipped with a hardware and installation instruction kit that includes: the shop drawing, detailed installation instructions, hex wrench for cam-lock panel assembly, PVC press fit caps and the light globe.

#### DOOR JAMB



Vapor Proof Light



Digital LED Thermometer & Switch



Heated Pressure-Relief Vent

The door jamb and door are constructed with a non-conductive heavy-duty PVC extrusion that provides a thermal barrier. The jamb includes an incandescent vapor-proof light fixture mounted on the center/top of the jamb, which provides extra space for shelving posts. A digital LED Thermometer (F°/C°) is provided, with On/Off pilot light switch.

Dynasty Freezer doors are equipped with a heated pressure relief vent mounted on the door jamb. In addition, the doors include a temperature controlled heater wire to ensure a positive frost free seal.

## POPULAR DYNASTY WALK-IN OPTIONS



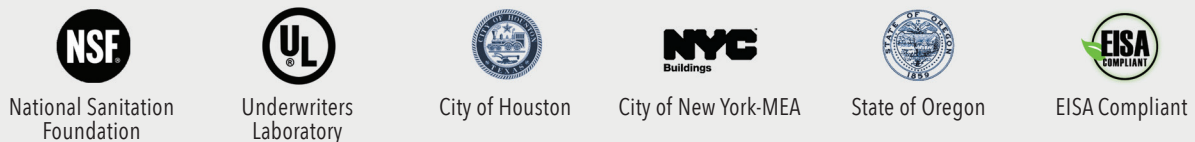
Many other optional features are available upon request. Please call us for details and pricing.

## DYNASTY WARRANTY PROTECTION



For complete warranty terms please visit: [www.amerikooler.com/support](http://www.amerikooler.com/support)

## CODE APPROVALS AND INDUSTRY LISTINGS



## INSULATION TEST STANDARDS

