

35 Series Service Case Double Duty - Deli



Pass-Thru Model

| Model No. | Description | Length | Depth | Height | Voltage | Amps | HP/BTUs | Power Cord | Est. Ship Weight |
|--------------------------|----------------|--------|-------|--------|---------|------|---------|------------|------------------|
| SC-CDS35-4-LED | Self-contained | 50" | 37.5" | 52" | 115 | 12.0 | 1/4 | YES | 500 |
| SC-CDS35-6-LED | Self-contained | 71" | 35.5" | 52" | 115 | 12.0 | 1/3 | YES | 645 |
| SC-CDS35-8-LED | Self-contained | 95" | 35.5" | 52" | 115 | 16.0 | 1/2 | YES | 900 |
| SC-CDS35-10-LED | Self-contained | 119" | 35.5" | 52" | 115 | 13.8 | 1/2 | NO | 1230 |
| SC-CDS35-12-LED | Self-contained | 143" | 35.5" | 52" | 115 | 17.4 | 3/4 | NO | 1344 |
| SC-CDS35-4-PT-LED | Self-contained | 50" | 37.5" | 52" | 115 | 12.0 | 1/4 | YES | 500 |
| SC-CDS35-6-PT-LED | Self-contained | 71" | 35.5" | 52" | 115 | 12.0 | 1/3 | YES | 645 |
| SC-CDS35-8-PT-LED | Self-contained | 95" | 35.5" | 52" | 115 | 16.0 | 1/2 | YES | 900 |
| R-CDS35-4-LED | Remote | 50" | 37.5" | 52" | 115 | 0.8 | 1400 | NO | 460 |
| R-CDS35-6-LED | Remote | 71" | 35.5" | 52" | 115 | 1.3 | 2100 | NO | 595 |
| R-CDS35-8-LED | Remote | 95" | 35.5" | 52" | 115 | 1.6 | 2800 | NO | 845 |
| R-CDS35-10-LED | Remote | 119" | 35.5" | 52" | 115 | 2.4 | 3500 | NO | 1175 |
| R-CDS35-12-LED | Remote | 143" | 35.5" | 52" | 115 | 2.4 | 4200 | NO | 1295 |

MODEL NUMBER PREFIX - SC = Self-contained R = Remote
 MODEL NUMBER SUFFIX - W = White B = Black S = Stainless Steel LED = LED - lighting
 • Cases are designed to operate at 75 degrees Fahrenheit and 55% relative humidity
 • Cases are equipped with drains; check your local building codes for connection requirements.
 • Specification subject to change without notice
 IF COLORS ARE MIXED AN ADDITIONAL CHARGE WILL APPLY



35 Series Service Case Double Duty - Deli

Standard Specifications and Optional Features

CONSTRUCTION

- UL - Classified to ANSI/NSF 7
- Foamed in place CFC free foam
- Thermal insulated front glass - 26" H
- Heavy gauge steel super structure
- Bottom storage
- Drain is included for cleaning

INTERIOR

- White, black or stainless steel ends
- Stainless steel heavy gauge mezzanine shelf
- White aluminum floor (bottom storage area)
- Air insulated baffle (prevents moisture from dripping into display area)

EXTERIOR

- Double pane rear removable doors
- Rear compression door jamb
- Removable front grille allows for cleaning
- Removable rear grille for easy servicing
- 1" Front Bumper

FINISHES

- White, black or stainless steel front and ends
- Stainless steel mirror trim
- Stainless steel heavy gauge top - 17.375" W
- Bottom rear is designer white, black or stainless steel aluminum

LIGHTING

- 2 rows of lighting at top of unit

ELECTRICAL REQUIREMENTS

- 115V 4', 6', & 8' with power cord
- Unit must be hard wired, 10' & 12' only
- UL/CUL listed
- 115V-5AMP general purpose receptacle (wired separately) 10' & 12' only

REFRIGERATION

- Copevap system (eliminates need for condensate pan)
- Self-contained - R513A expansion valve system
- Remote - R407A expansion valve system
- Gravity coil located at inside top of unit
- Automatic defrost electronically controlled (Self-contained units only)
- Electronically control maintains constant temperatures
- Remotes available

OPTIONS

- LED - lit
- LED - lit shelf
- Scale stand
- Paper cutter
- Stainless steel, laminate, or paint
- Mirrored doors
- Extra stainless steel mezzanine shelf
- Drop work shelf
- 2" Front bumper
- Door lock
- Digital thermometer
- Pass thru front doors 4', 6', 8' only
- Sandwich racks
- Salad pan settings

Important Note:

All refrigerated cases are designed to operate in an environment of 75 degrees and 55% relative humidity. Product must be cooled before being displayed within the case.

DRAIN IS REQUIRED

35 Series Service Case Double Duty - Deli

Technical Data

| Model No. | SC R | SC-CDS35-4-LED R-CDS35-4-LED | SC-CDS35-6-LED R-CDS35-6-LED | SC-CDS35-8-LED R-CDS35-8-LED | SC-CDS35-10-LED R-CDS35-10-LED | SC-CDS35-12-LED R-CDS35-12-LED |
|---|-------------|---------------------------------|---------------------------------|---------------------------------|-----------------------------------|-----------------------------------|
| Length | | 50" | 71" | 95" | 119" | 143" |
| Height | | 52" | 52" | 52" | 52" | 52" |
| Depth | | 35.5" | 35.5" | 35.5" | 35.5" | 35.5" |
| Depth with bottom door (Dimensions are +/- 1/4") | | 37.5" | | | | |
| Operating temperature | | 36°F to 40°F | 36°F to 40°F | 36°F to 40°F | 36°F to 40°F | 36°F to 40°F |
| Refrigerant (exp. valve) | SC | R513A | R513A | R513A | R513A | R513A |
| Refrigerant (exp. valve) | R | R407A | R407A | R407A | R407A | R407A |
| Compressor size HP | SC | 1/4 | 1/3 | 1/2 | 1/2 | 3/4 |
| Defrost per day (24 hours) | Air Defrost | 1 per day | 1 per day | 1 per day | 1 per day | 1 per day |
| BTU's at +20°F Evap. Temp. | R | 1400 | 2100 | 2800 | 3500 | 4200 |
| Voltage | SC | 115 | 115 | 115 | 115 | 115 |
| Amperage | SC | 12.0 | 12.0 | 16.0 | 13.8 | 17.4 |
| Remote Voltage | R | 115 | 115 | 115 | 115 | 115 |
| Amperage, lights only | R | 0.8 | 1.3 | 1.6 | 2.4 | 2.4 |
| Cord and plug | SC | YES | YES | YES | NO | NO |
| | R | NO | NO | NO | NO | NO |
| Exterior color | | W, B, S | W, B, S | W, B, S | W, B, S | W, B, S |
| Interior color | | W, B, S | W, B, S | W, B, S | W, B, S | W, B, S |
| Inside end panels | | W, B, S | W, B, S | W, B, S | W, B, S | W, B, S |
| Floors | | W, B, S | W, B, S | W, B, S | W, B, S | W, B, S |
| # of top doors | | 2 | 2 | 4 | 4 | 4 |
| Door size | | 19.56" x 19.25" | 29.81" x 19.25" | 19.56" x 19.25" | 23.81" x 19.25" | 29.81" x 19.25" |
| # of bottom doors | SC | 1 external | 2 | 2 | 2 | 4 |
| | R | 2 | 2 | 2 | 4 | 4 |
| # of coils | | 2 | 2 | 2 | 2 | 2 |
| Bottom storage | | Yes | Yes | Yes | Yes | Yes |
| Front glass | | 26" x 45" | 26" x 66" | 26" x 90" | 26" x 114" | 26" x 138" |
| # of main deck shelves | | 2 | 3 | 4 | 5 | 6 |
| Main deck size | | 31.625" x 22.25" | 31.625" x 22.25" | 31.625" x 22.25" | 31.625" x 22.25" | 31.625" x 22.25" |
| Cubic capacity | | 30 | 45 | 60 | 75 | 90 |
| Mezzanine shelf | | Standard | Standard | Standard | Standard | Standard |
| Shipping Info | | | | | | |
| Height | | 58" | 58" | 58" | 58" | 58" |
| Depth | | 44" | 44" | 44" | 44" | 44" |
| Length | | 61" | 87" | 109" | 135" | 157" |
| Gross weight SC/R | | 500/460 | 645/595 | 900/845 | 1230/1175 | 1344/1295 |
| Cubic feet | | 90 | 128 | 160 | 200 | 231 |

(ALL WHITE OR ALL BLACK, NO EXTRA CHARGE—IF COLORS ARE MIXED AN ADDITIONAL CHARGE WILL APPLY)

Prefix

SC = Self-contained
R = Remote

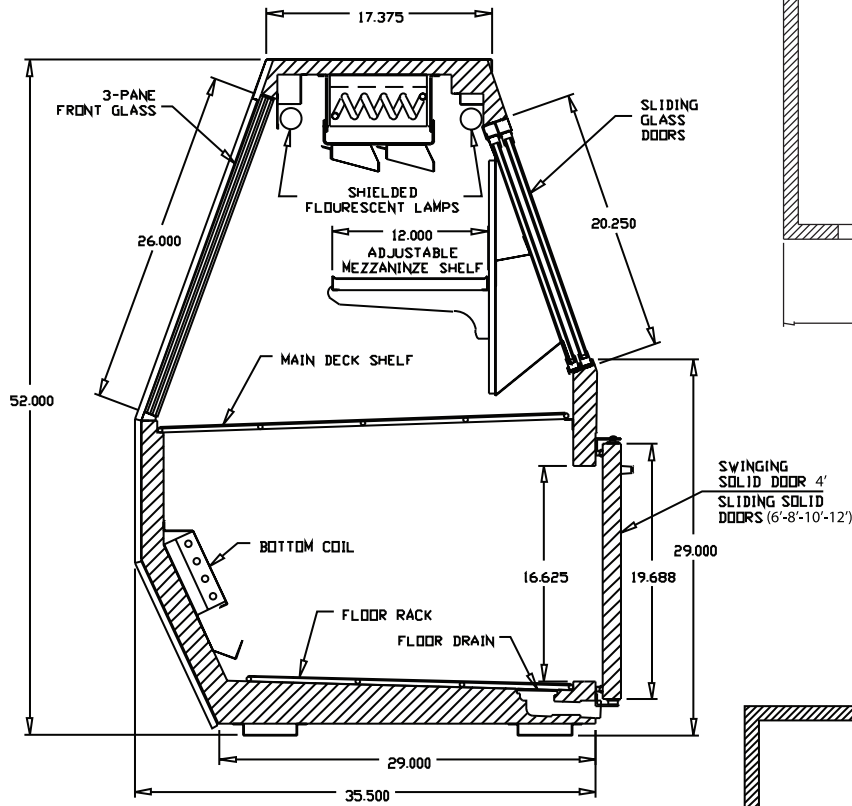
Suffix

B = Black
W = White
S = Stainless Steel
LED = LED lighting

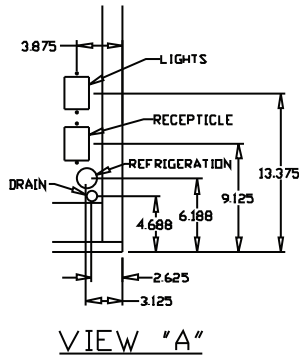
- Cases are designed to operate at 75 degrees Fahrenheit and 55% relative humidity
- Cases are equipped with drains; check your local building codes for connection requirements.
- Specification subject to change without notice

35 Series Service Case Double Duty - Deli

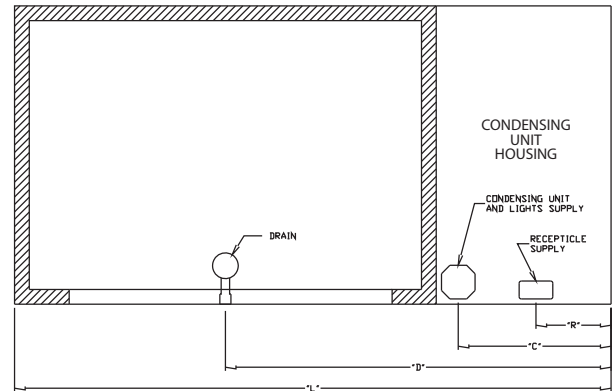
Technical Data • Side View • Plan View



Cross Section

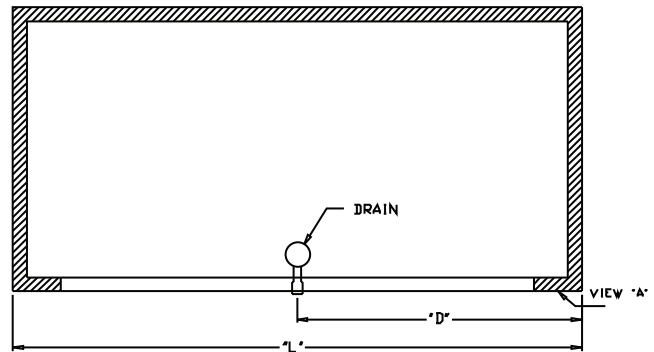


VIEW "A"



| SIZE | "L" | "R" | "C" | "D" |
|------|-----|-----|--------|--------|
| 4 | 50 | 25 | 25 | 33 |
| 6 | 71 | 9 | 18.250 | 45.875 |
| 8 | 95 | 9 | 18.250 | 57.875 |
| 10 | 119 | 9 | 18.250 | 69.875 |
| 12 | 143 | 9 | 18.250 | 81.875 |

Plan View Self-contained



| SIZE | "L" | "D" |
|------|-----|-------|
| 4 | 50 | 25.00 |
| 6 | 71 | 35.50 |
| 8 | 95 | 47.50 |
| 10 | 119 | 59.50 |
| 12 | 143 | 61.50 |

Plan View Remote