











# SALAD PREP TABLE

DSP60-16-D4

4-Drawers / Regular Top



## PRODUCT FEATURES

-  The compressor is mounted in the back and placed in the coolest possible area; this makes it easily accessible for servicing.
-  Digital temperature controls with LED display for precise adjustment and automatic defrosting system.
-  Temperatures in the cabinet range from 33 to 41 degrees Fahrenheit.
-  Higher Resistance to dust, high quality condenser.
-  R290 Natural Refrigerant promotes faster cool down and efficient energy consumption.
-  Drawers hold 6" deep food pans (not included) with heavy-duty, high-capacity slide rails.
-  Top prep rail comes equipped with 6" deep 1/6 plastic pans.
-  6" casters with lock for easy mobility.



## HIGH QUALITY STAINLESS STEEL & ROBUST DESIGN



## TECHNICAL SPECIFICATIONS

Voltage/Frequency	115V/60Hz
Refrigerant	R290
Type of Defrost	Automatic
Interior Material	Stainless Steel
Exterior Material	Stainless Steel
Temperature Range °F	33 ~ 41°F
Compressor Power (HP)	1/3
Nema Config.	NEMA5-15P



Los Angeles | San Francisco | Dallas  
Houston | Florida | Chicago | New Jersey

 1-800-931-8628

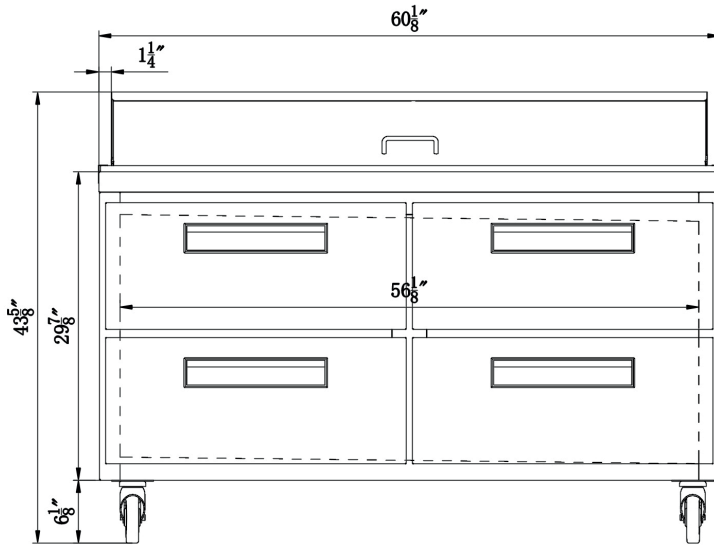
 [info@dukersusa.com](mailto:info@dukersusa.com)

[www.DukersUSA.com](http://www.DukersUSA.com)

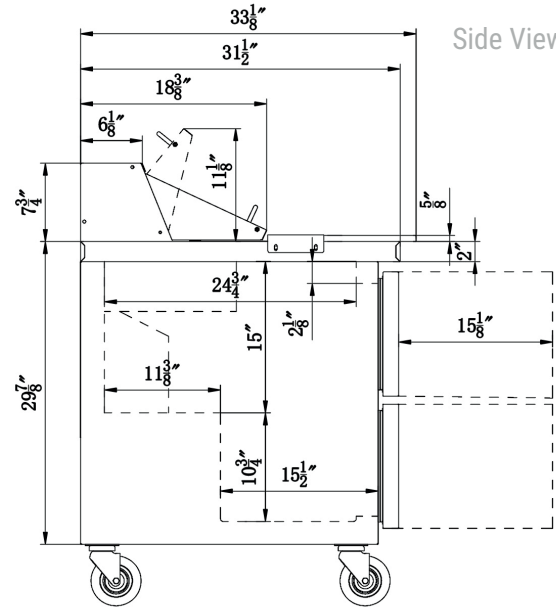
# DETAILS & SPECIFICATIONS

## SALAD PREP TABLE DSP60-16-D4

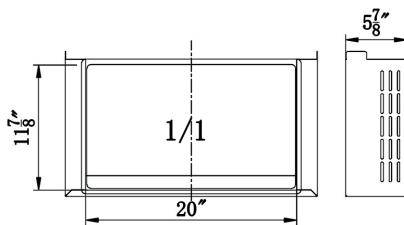
Front View



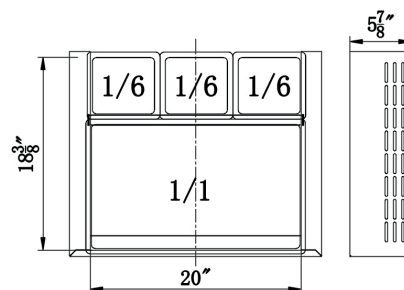
Side View



Upper drawer



Lower drawer



### MODEL DSP60-16-D4

Cutting Board Size	60 x 14.5
Rated Voltage	115V
Rated Frequency	60Hz
Total Input Power	280W
Total Current	2.4A
Total Capacity	14.33 cu ft
Climatic Category	4-5
Protection Type	I
Design Pressure High Side	300 PSIG
Design Pressure Low Side	150 PSIG
Insulation Blowing Gas	C-Pentane
Refrigerant	R290/3.88 oz

MODEL	EXTERNAL DIMENSION WXDXH (INCHES)	PACKAGING DIMENSION WXDXH (INCHES)	PRODUCT NET WEIGHT	# OF DRAWERS	40HQ CONTAINER CERT.
DSP60-16-D4	60 1/8 x 31 1/2 x 43 5/8	64 3/8 x 35 7/8 x 48 3/8	275 lbs	4	28

Important: a) Width does not include 1/5" on each side for cutting board pins. b) Depth does not include 1" for rear bumpers. c) Height does include casters.



AutoQuotes



115/60/1  
NEMA-5-15P



Los Angeles | San Francisco | Dallas  
Houston | Florida | Chicago | New Jersey

1-800-931-8628

@info@dukersusa.com

www.DukersUSA.com