

ESTABLISHING A **NEW STANDARD** IN THE COMMERCIAL REFRIGERATION INDUSTRY.

ITS ATTRACTIVE DESIGN AND **LARGE EXHIBITION SPACE** IS IDEAL TO DISPLAY A **GREAT VARIETY OF PRODUCTS**.



## ➤ KEY FEATURES

### • **BMAD Refrigeration System**

Ensures rapid and effective cabinet cool down and maintains consistent temperature range with minimum energy consumption

### • **Electronic Temperature Controller**

Assures the optimal performance of the cooler, delivering product temperature ideal for consumption.

### • **High Efficiency Glass Door**

Equipped with double panel glass and low-e film to reduce condensation. Door hinge is equipped with a self-closing system to ensure the door closes safely, and returns to original position, without any damages.

### • **LED Lighting System**

Our LED system uses a fraction of the energy of regular fluorescent lights and requires no replacement for up seven years.

### • **CFC and HFC Free Cyclopentane Foam**

Eco-friendly, recyclable and high efficiency cabinet insulation.

### • **Electronic Fan Motors**

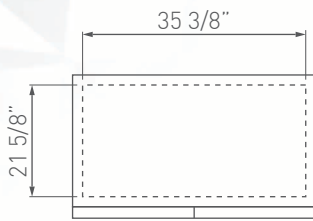
Enhances performance and efficiency. Uses only a fraction of the energy than industry standard shaded-pole motor requires. Longer lifespan fan motor.

### • **Low Maintenance Condenser**

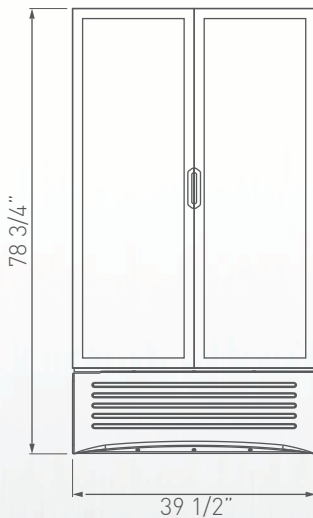
Imbera's finless condenser designed to minimize maintenance. Drastically reduces Total Cost of Ownership. Prevents dust that blocks air flow, to save energy and extend the life of the compressor.

ESTABLISHING A **NEW STANDARD** IN THE COMMERCIAL REFRIGERATION INDUSTRY.

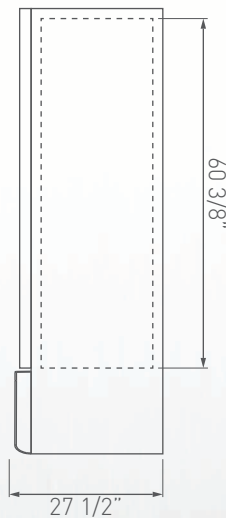
## PRODUCT VIEWS



**TOP VIEW**



**FRONT VIEW**



**SIDE VIEW**

### Warranty:

Three year limited warranty on all parts and labor, an additional two year warranty on compressor. (USA and Canada only)

Dimensions rounded up to the nearest inch or millimeter.  
Specifications subject to change without notice.

Customer Service: 866-363-0079 | [WWW.IMBERAFOODSERVICE.COM](http://WWW.IMBERAFOODSERVICE.COM)

## TECHNICAL SPECIFICATIONS

Exterior Dimensions	W:	39 1/2"	1000 mm
	D:	27 1/2"	700 mm
	H:	78 3/4"	2000 mm

Interior Dimensions	W:	35 3/8"	898 mm
	D:	21 5/8"	548 mm
	H:	60 3/8"	1535 mm

Dimensions w/packaging	W:	42 1/8"	1069 mm
	D:	29 7/8"	760 mm
	H:	82 5/8"	2100 mm

Shelf Size	W:	15 7/8"	404 mm
	D:	19 1/2"	494 mm

<b>Weight</b>	336.2 Lbs	152.5 kg
<b>Weight w/packaging</b>	353.8 Lbs	160.5 kg

<b>Shelves</b>	10
----------------	----

<b>Capacity 20oz.</b>	<b>Flat:</b>	300
-----------------------	--------------	-----

## REFRIGERATION DATA

<b>Energy Consumption</b>	6.174 kWh/day
---------------------------	---------------

<b>Voltage</b>	115/60
----------------	--------

<b>Horse Power</b>	1/3
--------------------	-----

<b>AMPS</b>	7.6
-------------	-----

## LOGISTIC

<b>Trailer Loads</b>	40':	33
	53':	44

<b>Certifications</b>	UL:	✓
	UL/EPH:	✓

\* Energy consumption based on ANSI/ASHRAE Standard 72-2005.

BMAD System (Low maintenance high performance).  
Dimensions rounded up to the nearest inch or millimeter.  
Specifications subject to change without notice.