

## Curved Glass Display Case

### Durable Design

- Interior: Stainless steel#304
- Exterior: Tempered glass and SUS304 metal for finish
- Double-Paned\*
- Rounded corner design inside of the cabinet makes it easy to clean the inside stage room
- Self-Closing door

### Energy Efficient

- Electronic control system makes it easy to adjust temperature set point and defrost frequency
- Auto defrost system for the rear door frame and front glass

### Superior Quality

- Preinstalled heavy-duty casters with adjustable legs
- Shelves: Adjustable heavy-duty shelves
- LED interior lighting



NJGL

# KONA



MODEL NUMBER	SHELVES	DIMENSIONS W x D x H	VOLTAGE	HP	AMPS	CAPACITY (cubic feet)
NJGL-48	4	47.2" x 29.5" x 53.2"	115/60/1	1/3	4.9	14
NJGL-60	4	59" x 29.5" x 53.2"	115/60/1	1/2	6.2	21.2
NJGL-72	4	70.8" x 29.5" X 53.2"	115/60/1	1/2	6.8	23

Warranty:  
12 months parts and labor. Additional 48 months on compressor (part only)  
Specifications subject to change without notice.

# KONA



## Refrigerated Display Cases



# Flat Glass Display Case



## Durable Design

- Forced air, self-contained refrigerated merchandiser (for the refrigerated cases only)
- Modern design for merchandising beverages, cheese, sandwiches and much more
- Exterior tempered safety glass
- 2 Removable rear sliding glass doors
- Designed for mobility, reliability & efficiency in commercial kitchens
- (2) Height Adjustable shelves
- Slide out condensing unit for easy maintenance
- Four (4) casters
- Simple plug-in installation
- Self-Closing door

## Energy Efficient

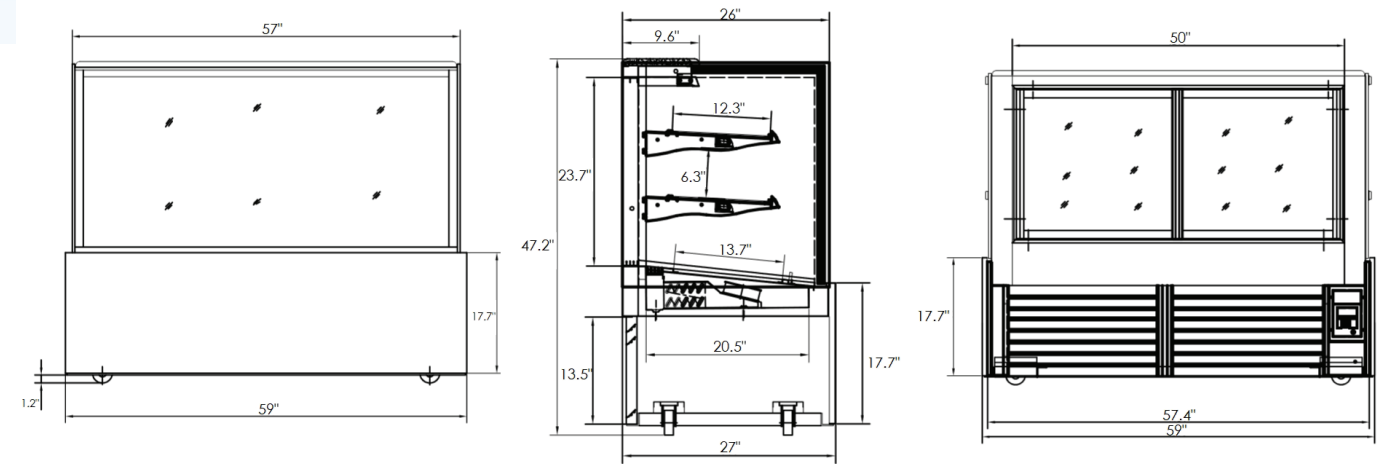
- Digital temperature readout display with electronic thermostatic control
- Double layer glass for front and sides with the film heaters inside of the glass.  
(for the dry cases: double layer glass but without heaters.)
- LED lighting at top & under shelves
- Automatic defrost system
- Case holds 36°F - 41°F

## Superior Quality

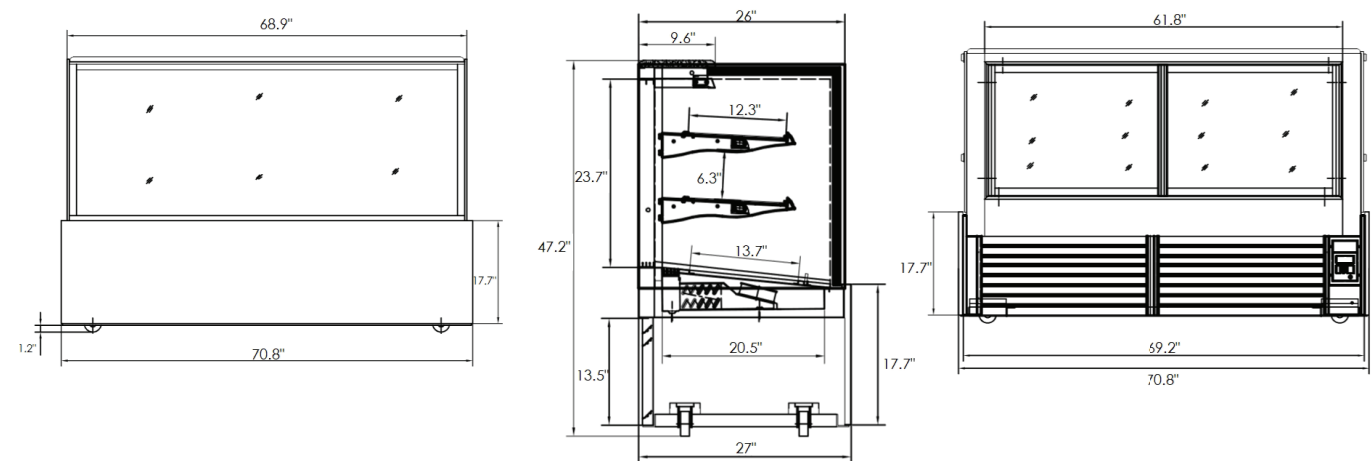
- Stainless steel lower body panels
- Solid body construction
- Certified to ETL safety and sanitation standards
- CFC-free refrigerant with R-134a gas



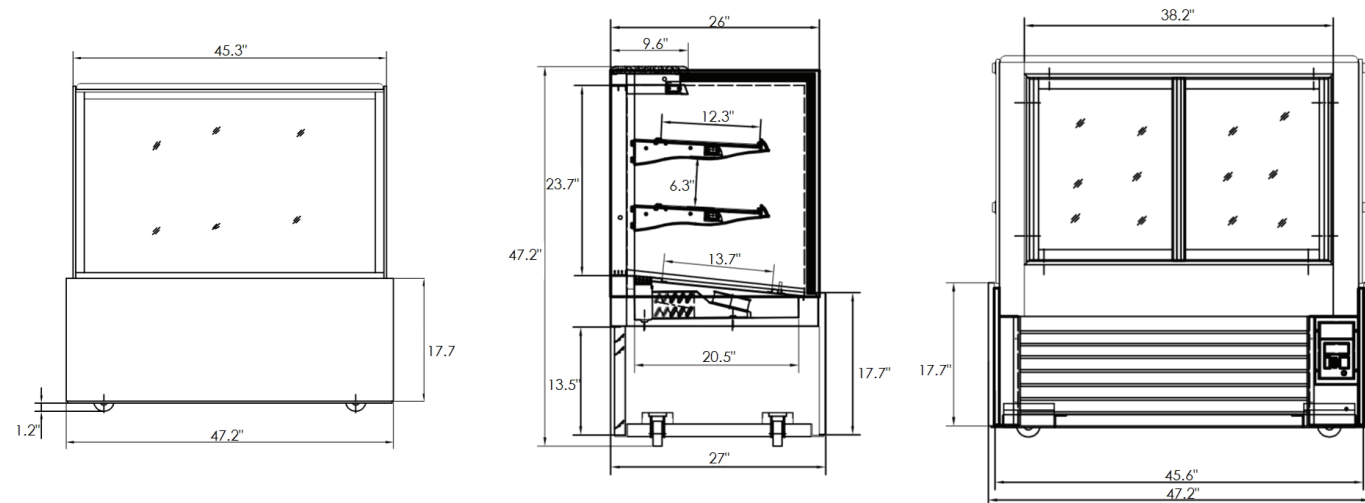
NJBF-60 | NJBF-60D



NJBF-72 | NJBF-72D



NJBF-48 | NJBF-48D



MODEL NUMBER	CAPACITY (cubic feet)	EXTERNAL DIMS W x D x H	VOLTAGE	AMPS	COMPRESSOR	SHIPPING DIMENSIONS W x D x H	SHIP WEIGHT (LBS)
NJBF-48	13.7	47.2" x 27" x 48"	110/60/1	9.0	1/3	50.8" x 29.5" x 51.2"	562
NJBF-60	17.6	59" x 27" x 48"	110/60/1	10.0	1/2	62.6" x 29.5" x 51.2"	661
NJBF-72	21.5	70.8 x 27 x 48	110/60/1	12.0	2/3	74.4" x 29.5" x 51.2"	749
NJBF-48D	13.7	47.2" x 27" x 48"	110/60/1	0.35	N/A	50.8" x 29.5" x 51.2"	451
NJBF-60D	17.6	59" x 27" x 48"	110/60/1	0.62	N/A	62.6" x 29.5" x 51.2"	529
NJBF-72D	21.5	70.8 x 27 x 48	110/60/1	0.66	N/A	74.4" x 29.5" x 51.2"	584