



Manufacturer and Supplier of  
**Restaurant Equipment**  
 and **Display Cases**  
 for the Food Service Industry



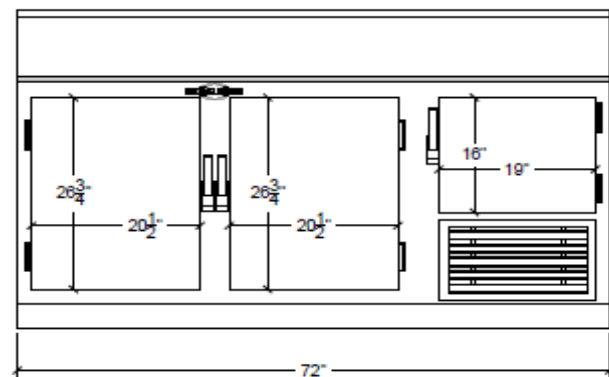
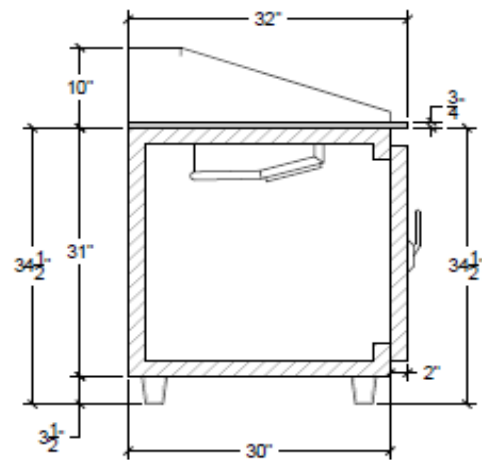
# MODEL: SC-72-DRT

## PRODUCT FEATURES

### DOUGH RETARDER

- Super structure to hold (4) 1/6 pans
- Stainless Steel front
- 2 1/2 pull out Stainless Steel doors
- Self-contained
- 32" marble top
- Holds 33°-41°F temperatures
- Compressor can be serviced easily
- Environmentally friendly 134A refrigerant
- Full size doors designed to store dough pans
- Tray slides (optional)

- |                   |                         |
|-------------------|-------------------------|
| Casters           | 5" Casters Optional     |
| Warranty          | 1 yr Parts & Compressor |
| Front Door        | Stainless Steel         |
| Front Motor Cover | Anodized Aluminum       |
| Interior Walls    | Stainless Steel         |
| Outside Back      | Galvanized              |



### Product Specifications

Dimensions	Doors	Pans	Cooling Cycle	Refrigerant	HP	Power	Ampr.	BTU	Freon (oz)
72" x 32" x 46"	2 1/2	4	33-41	134a	1/3	115/60/1	12.5	1400	11.5

### Additional Models

Model #	Doors	Pans	Cooling Cycle	Refrigerant	HP	Power	Ampr.	BTU	Freon (oz)
SC-48-DRT	1 1/2	4	33-41	134a	1/3	115/60/1	9.8	1100	10
SC-96-DRT	3 1/2	12	33-41	134a	1/2	115/60/1	14	1850	15

\* Model number designates product length. Due to product improvement, we reserve the right to change specifications without notice.