



PROJECT

ITEM NO: _____

QUANTITY: _____

Ceiling Hung Pot Racks

FEATURES & CONSTRUCTION:

- All exposed welded areas smooth polished to brush finish sanitary #4.
- All units shipped K.D. and easily assembled.
- Double sided pot hooks included.
- Hanging chain available for additional charge.

MATERIAL:

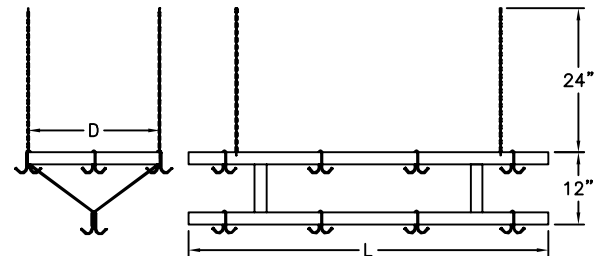
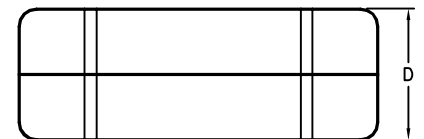
Pot Rack: 1/4"x2" Stainless Steel Flat Bar
 Hanging Chain: Galvanized Steel
 Pot Hooks: Stainless Steel



NSF Certified



SM-CR60



MODEL#	UNIT SIZE			HOOKS
	L	D	H	
SM-CR36	36"	22"	12"	12
SM-CR48	48"			
SM-CR60	60"			
SM-CR72	72"			18
SM-CR84	84"			
SM-CR96	96"			

Wall Mounted Double Bar Pot Racks

FEATURES & CONSTRUCTION:

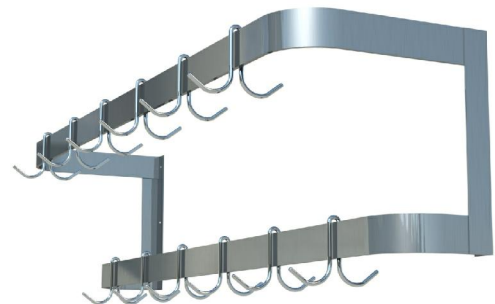
- All exposed welded areas smooth polished to brush finish sanitary #4.
- Double sided pot hooks included.

MATERIAL:

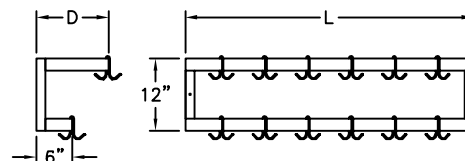
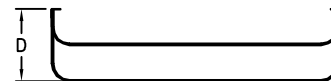
Pot Rack: 1/4"x2" Stainless Steel Flat Bar
 Pot Hooks: Stainless Steel



NSF Certified



SM-WR48



MODEL#	UNIT SIZE			HOOKS
	L	D	H	
SM-WR24	24"	12"	12"	12
SM-WR36	36"			
SM-WR48	48"			
SM-WR60	60"			18
SM-WR72	72"			
SM-WR84	84"			
SM-WR96	96"			

Specifications subject to change without notice.

All dimensions are typical (Tolerance 1/2").



SAPPHIRE MANUFACTURING
 Tel: 718-543-2111
 Fax: 718-543-2121

info@sapphiremanufacturing.com
 WWW.SAPPHIREMANUFACTURING.COM

Rev. 11/16