



PROJECT \_\_\_\_\_

ITEM NO: \_\_\_\_\_

QUANTITY: \_\_\_\_\_

# 1 Compartment Bar Sinks

## FEATURES & CONSTRUCTION:

- Top is fabricated with 1" flat front edge with 2"x4" high flat top backsplash
- All exposed welded areas smooth polished to brush finish sanitary #4.
- Welded Stainless Steel leg socket for removable legs.
- All units shipped K.D. and easily assembled.

## MATERIAL:

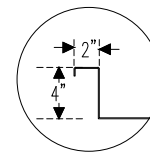
- Top & Bowls: 20 Ga. stainless steel - 304
- Apron: 20 Ga. stainless steel - 304
- Leg: 1 5/8" galvanized steel
- Crossbar: 1 1/4" galvanized steel
- Bullet Feet: 1" adjustable plastic bullet feet

## ACCESSORIES:

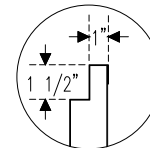
4" center wall mount faucet and overflow kit Included



NSF Certified



2"x4" high Backsplash



Square Edge Front



Aluminum Die Cast Fitting For Adj. Cross Bar



1 1/2" Basket Drain



1" Adjustable Plastic Bullet Feet

MODEL#	UNIT SIZE			BOWL SIZE			DRAINBOARD	
	L	D	H	A	B	C	LEFT	RIGHT
SMBS-1	14"	18 3/4"	32"	10"	14"	10"	0	0
SMBS-1L	24"						12	0
SMBS-1R	24"						0	12
SMBS-1D	36"						13	13



SAPPHIRE MANUFACTURING  
Tel: 718-543-2111  
Fax: 718-543-2121

Rev. 05/17

info@sapphiremanufacturing.com  
WWW.SAPPHIREMANUFACTURING.COM



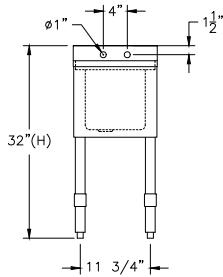
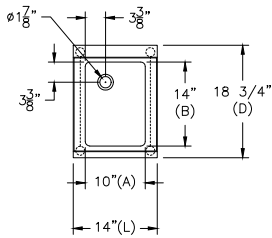
PROJECT

ITEM NO:

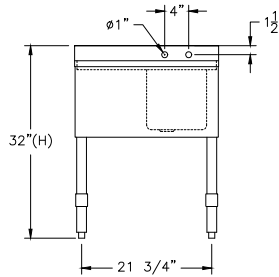
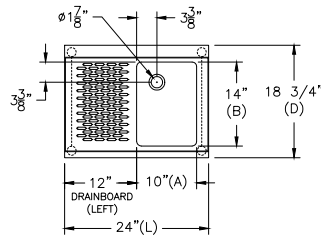
QUANTITY:

# 1 Compartment Bar Sinks

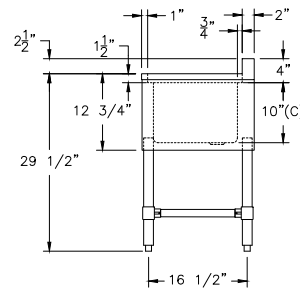
## NO DRAIN BOARD SMBS-1



## DRAIN BOARD: LEFT SMBS-1L

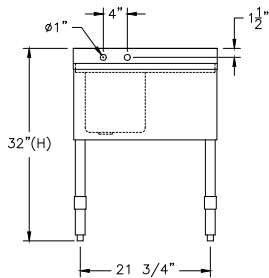
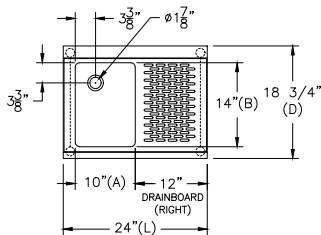


NSF Certified

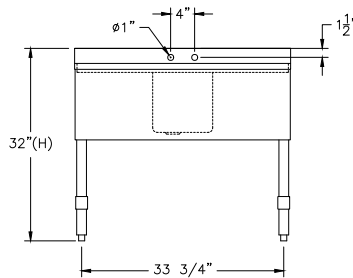
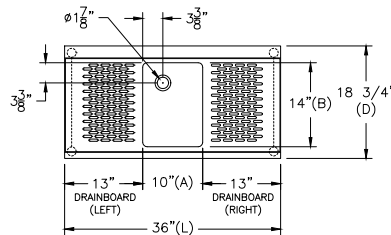


Common End View

## DRAIN BOARD: RIGHT SMBS-1R



## DRAIN BOARD: L & R SMBS-1D



Specifications subject to change without notice. All dimensions are typical (Tolerance 1/2").



SAPPHIRE MANUFACTURING  
Tel: 718-543-2111  
Fax: 718-543-2121

info@sapphiremanufacturing.com  
WWW.SAPPHIREMANUFACTURING.COM

Rev. 05/17