



PROJECT

ITEM NO:

QUANTITY:

## 3 Compartment Bar Sinks

### FEATURES & CONSTRUCTION:

- Top is fabricated with 1" flat front edge with 2"x4" high flat top backsplash
- All exposed welded areas smooth polished to brush finish sanitary #4.
- Welded Stainless Steel leg socket for removable legs.
- All units shipped K.D. and easily assembled.

### MATERIAL:

- Top & Bowls: 20 Ga. stainless steel - 304  
 Apron: 20 Ga. stainless steel - 304  
 Leg: 1 5/8" galvanized steel  
 Crossbar: 1 1/4" galvanized steel  
 Bullet Feet: 1" adjustable plastic bullet feet

### ACCESSORIES:

4" center wall mount faucet and overflow kit Included



NSF Certified



SMBS-3



SMBS-3L



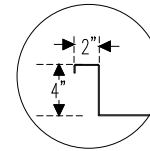
SMBS-3R



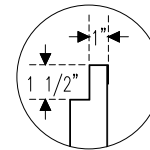
SMBS-3D



SMBS-3D18



2"x4" high Backsplash



Square Edge Front



Aluminum Die Cast Fitting For Adj. Cross Bar



1 1/2" Basket Drain



1" Adjustable Plastic Bullet Feet

MODEL#	UNIT SIZE			BOWL SIZE			DRAINBOARD	
	L	D	H	A	B	C	LEFT	RIGHT
SMBS-3	26"	18 3/4"	32"	10"	14"	10"	0	0
SMBS-3L	48"						12	0
SMBS-3R	48"						0	12
SMBS-3D	60"						13	13
SMBS-3D18	72"						19	19



SAPPHIRE MANUFACTURING  
 Tel: 718-543-2111  
 Fax: 718-543-2121

Rev. 05/17

info@sapphiremanufacturing.com  
 WWW.SAPPHIREMANUFACTURING.COM



PROJECT \_\_\_\_\_

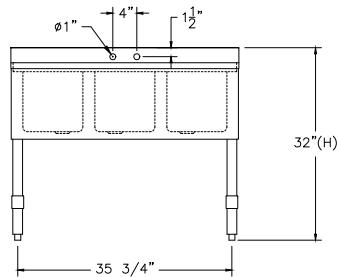
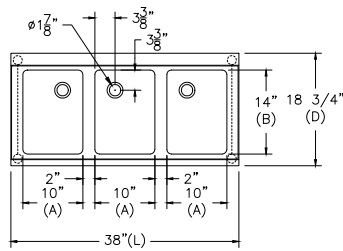
ITEM NO: \_\_\_\_\_

QUANTITY: \_\_\_\_\_

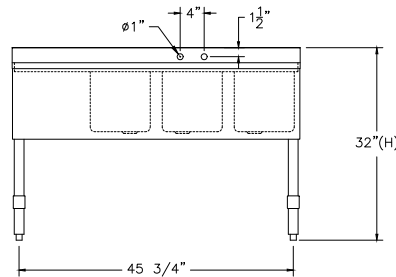
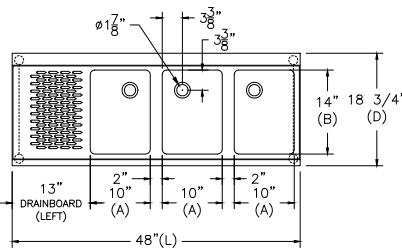
# 3 Compartment Bar Sinks



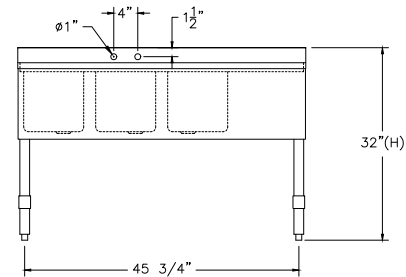
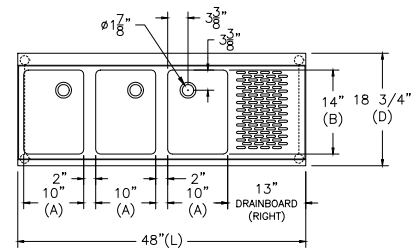
**NO DRAIN BOARD**  
SMBS-3



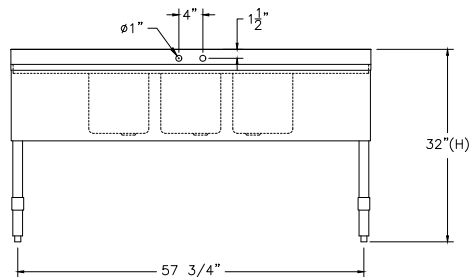
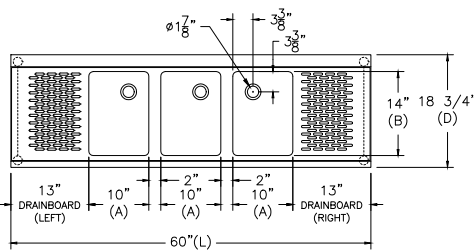
**DRAIN BOARD: LEFT**  
SMBS-3L



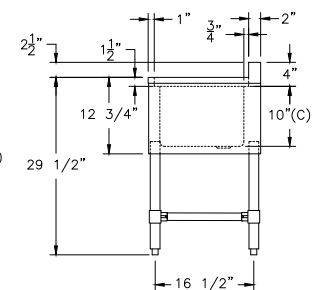
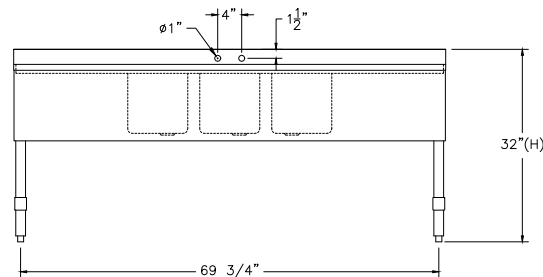
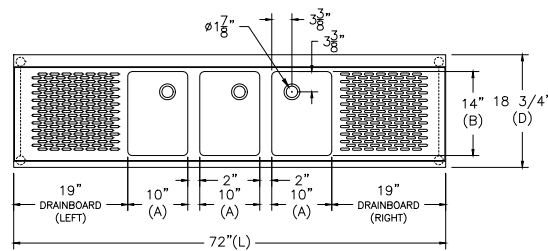
**DRAIN BOARD: RIGHT**  
SMBS-3R



**DRAIN BOARD: L & R**  
SMBS-3D



**DRAIN BOARD: L & R**  
SMBS-3D18



Common End View

Specifications subject to change without notice. All dimensions are typical (Tolerance 1/2").



SAPPHIRE MANUFACTURING  
Tel: 718-543-2111  
Fax: 718-543-2121

info@sapphiremanufacturing.com  
WWW.SAPPHIREMANUFACTURING.COM

Rev. 05/17