



PROJECT

ITEM NO:

QUANTITY:

Dish Cabinet With Hinge Door

FEATURES & CONSTRUCTION:

- Top is fabricated with 1- 1/2" bull nose front edge , flat edges at rear and both sides.
- All exposed welded areas smooth polished to brush finish sanitary #4.
- 1-5/8" stainless steel legs with adjustable bullet feet.
- Stainless steel hinge door(s) with recessed pull handle and magnetic door catcher, optional keyed door lock available.
- Reinforced hat channel support for top, intermediate shelf and bottom shelf.
- Stainless steel pilasters allow for adjustable middle shelf.
- All units shipped K.D., but easily assembled.

MATERIAL:

Top: 16 Ga. stainless steel - 304
 Body: 18 Ga. stainless steel - 304
 Shelf: 18 Ga. stainless steel - 304
 Door: 18 Ga. stainless steel - 304
 Leg: 1-5/8" stainless steel with 2" adjustable stainless steel bullet feet



NSF STD.2
 Certified

MODEL#		UNIT SIZE		
W/O DOOR LOCK	WITH DOOR LOCK	L	D	H
SMDC-2418H	SMDC-2418HL	18"	24"	35 1/2"
SMDC-2424H	SMDC-2424HL	24"		
SMDC-2436H	SMDC-2436HL	36"		
SMDC-2448H	SMDC-2448HL	48"		
SMDC-2460H	SMDC-2460HL	60"		
SMDC-2472H	SMDC-2472HL	72"		



SMDC-2418H



SMDC-2448HL

Note: Keyed door lock are optional

24"x18"

24"x24"

24"x36"

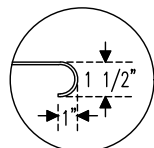
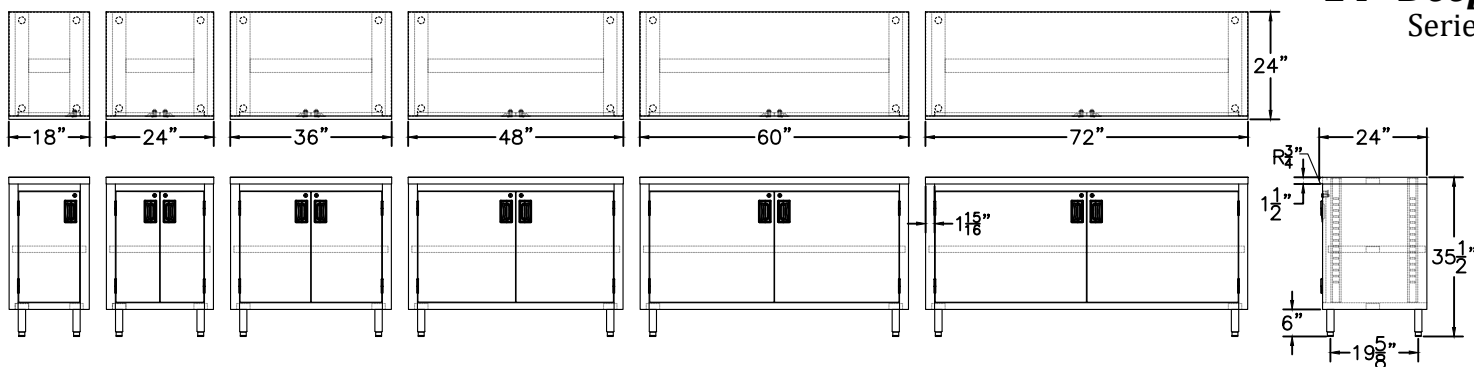
24"x48"

24"x60"

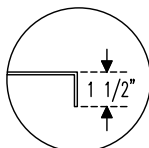
24"x72"

SIDE VIEW

24" Deep Series



Bull Nose Edge Front



Flat Edge at Rear And Both Sides



S/S. Pilasters for Adj. Middle Shelf



S/S. Lift-Off Hinges



Key Lock Optional



S/S. Recessed Pull Handle



S/S. Bullet Feet 2" Adjustable

Specifications subject to change without notice.

All dimensions are typical (Tolerance 1/2").



Rev. 11/22

SAPPHIRE MANUFACTURING
 Tel: 718-543-2111
 Fax: 718-543-2121

info@sapphiremanufacturing.com
 WWW.SAPPHIREMANUFACTURING.COM