



PROJECT

ITEM NO:

QUANTITY:

Dish Cabinet With Flat Top And Sliding Doors

FEATURES & CONSTRUCTION:

- Top is fabricated with 1- 1/2" bull nose front edge, flat edges at rear and both sides.
- All exposed welded areas smooth polished to brush finish sanitary #4.
- 1-5/8" stainless steel legs with adjustable bullet feet.
- Stainless steel Sliding doors with recessed handle.
- Reinforced hat channel support for top, intermediate shelf and bottom shelf.
- Stainless steel pilasters allow for adjustable middle shelf.
- All units shipped K.D., but easily assembled.

MATERIAL:

Top: 16 Ga. stainless steel - 304
 Body: 18 Ga. stainless steel - 304
 Shelf: 18 Ga. stainless steel - 304
 Door: 18 Ga. stainless steel - 304
 Leg: 1-5/8" stainless steel with 2" adjustable stainless steel bullet feet



NSF STD.2
 Certified

MODEL#	UNIT SIZE		
	L	D	H
SMDC-2436S	36"	24"	35 1/2"
SMDC-2448S	48"		
SMDC-2460S	60"		
SMDC-2472S	72"		

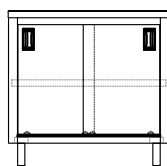
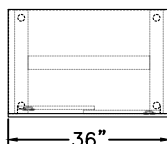


SMDC-2436S

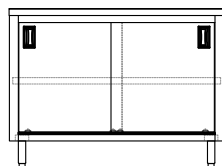
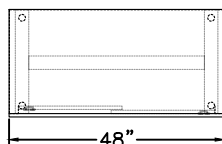


SMDC-2460S

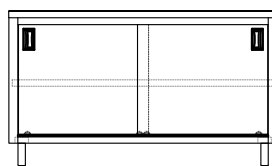
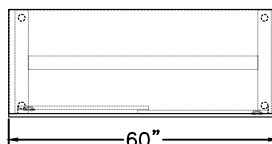
24"x36"



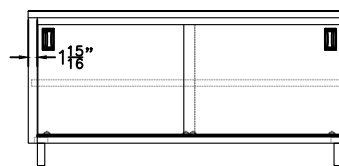
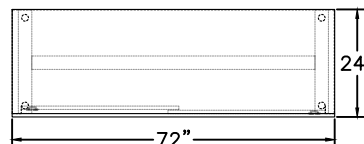
24"x48"



24"x60"

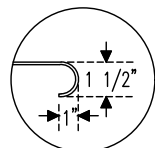
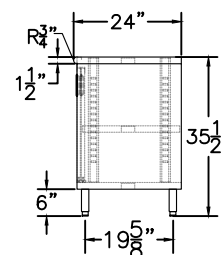


24"x72"

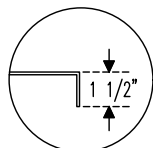


SIDE VIEW

24" Deep Series



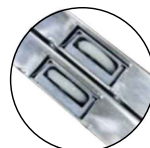
Bull Nose Edge Front



Flat Edge At Rear And Both Sides



S/S. Pilasters for Adj. Middle Shelf



Sliding Door Track Roller



S/S. Recessed Handle



S/S. Bullet Feet 2" Adjustable

Specifications subject to change without notice.

All dimensions are typical (Tolerance 1/2").



Rev. 11/22

SAPPHIRE MANUFACTURING
 Tel: 718-543-2111
 Fax: 718-543-2121

info@sapphiremanufacturing.com
 WWW.SAPPHIREMANUFACTURING.COM