



PROJECT

ITEM NO:

QUANTITY:

Dish Cabinet With Flat Top And Sliding Doors

FEATURES & CONSTRUCTION:

- Top is fabricated with 1- 1/2" bull nose front edge, flat edges at rear and both sides.
- All exposed welded areas smooth polished to brush finish sanitary #4.
- 1-5/8" stainless steel legs with adjustable bullet feet.
- Stainless steel Sliding doors with recessed handle.
- Reinforced hat channel support for top, intermediate shelf and bottom shelf.
- Stainless steel pilasters allow for adjustable middle shelf.
- All units shipped K.D., but easily assembled.

MATERIAL:

Top: 16 Ga. stainless steel - 304
 Body: 18 Ga. stainless steel - 304
 Shelf: 18 Ga. stainless steel - 304
 Door: 18 Ga. stainless steel - 304
 Leg: 1-5/8" stainless steel with 2" adjustable stainless steel bullet feet



NSF STD.2
 Certified



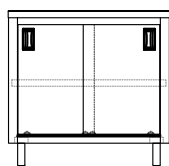
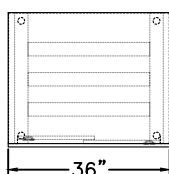
SMDC-3036S



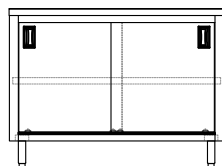
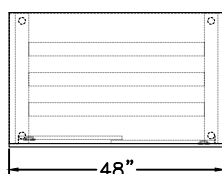
SMDC-3060S

MODEL#	UNIT SIZE		
	L	D	H
SMDC-3036S	36"	30"	35 1/2"
SMDC-3048S	48"		
SMDC-3060S	60"		
SMDC-3072S	72"		

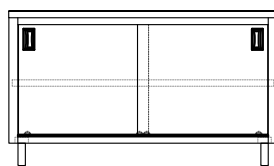
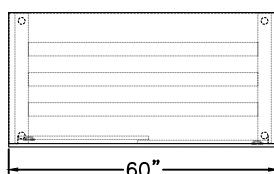
30"x36"



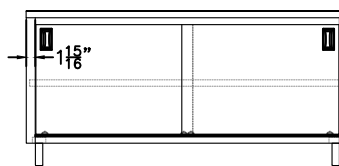
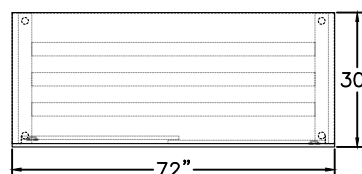
30"x48"



30"x60"

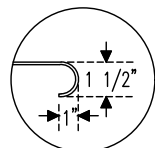
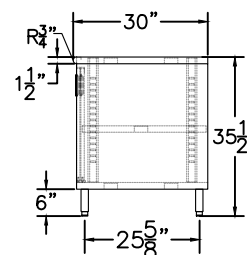


30"x72"

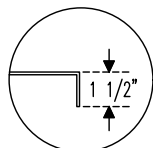


SIDE VIEW

30"Deep
 Series



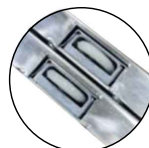
Bull Nose
 Edge Front



Flat Edge At Rear
 And Both Sides



S/S. Pilasters for
 Adj. Middle Shelf



Sliding Door
 Track Roller



S/S. Recessed
 Handle



S/S. Bullet Feet
 2" Adjustable

Specifications subject to change without notice.

All dimensions are typical (Tolerance 1/2").



Rev. 11/22

SAPPHIRE MANUFACTURING
 Tel: 718-543-2111
 Fax: 718-543-2121

info@sapphiremanufacturing.com
 WWW.SAPPHIREMANUFACTURING.COM