



PROJECT \_\_\_\_\_

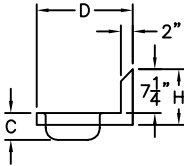
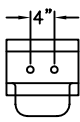
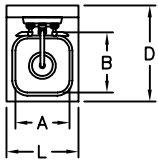
ITEM NO: \_\_\_\_\_

QUANTITY: \_\_\_\_\_

## Wall Mounted Hand Sink

### FEATURES & CONSTRUCTION:

- Sink is fabricated with 1/2" radius rounded top edge and 7-1/4" high backsplash.
- Coved corner sink bowl with 2" radius.
- All exposed welded areas smooth polished to brush finish sanitary #4.
- Wall mounting clip included.
- Accessories included: faucet and strainer



### MATERIAL:

20 Ga. Stainless Steel - 304



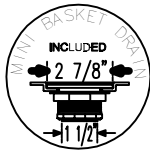
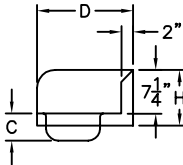
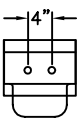
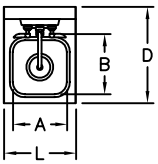
NSF Certified

MODEL#	UNIT SIZE			BOWL SIZE		
	L	D	H	A	B	C
SMHS-02	12"	16"	9 1/4"	9"	9"	4 1/2"

## Wall Mounted Hand Sink With Side Splashes

### FEATURES & CONSTRUCTION:

- Sink is fabricated with 1/2" radius rounded top edge and 7-1/4" high rear and side splash guard.
- Coved corner sink bowl with 2" radius.
- All exposed welded areas smooth polished to brush finish sanitary #4.
- Wall mounting clip included.
- Accessories included: faucet and strainer



### MATERIAL:

20 Ga. Stainless Steel - 304



NSF Certified

MODEL#	UNIT SIZE			BOWL SIZE		
	L	D	H	A	B	C
SMHS-02D	12"	16"	9 1/4"	9"	9"	4 1/2"

Specifications subject to change without notice.

All dimensions are typical (Tolerance 1/2").



SAPPHIRE MANUFACTURING  
Tel: 718-543-2111  
Fax: 718-543-2121

info@sapphiremanufacturing.com  
WWW.SAPPHIREMANUFACTURING.COM

Rev. 11/16