

## 35 Series – Hot Food Case

• PRODUCT SPECIFICATIONS SHEETS



### Self-Contained

Length

Height

Depth

# Of Wells

(Dimensions are +/-1/4")

CHS35-4

50"

52"

35-1/2"

3

CHS35-6

71"

52"

35-1/2"

4

CHS35-8

95"

52"

35-1/2"

6

• Specification subject to change without notice

### Standard Specifications and Optional Features

<p><b>CONSTRUCTION</b>          Foamed in place CFC free foam          Single pane tempered front safety glass          Heavy gauge steel super structure          ETL listed for Safety and Sanitation</p>	<p><b>FINISHES</b>          Satin finish extrusion on doors and door tracks          Designer white exterior front and ends          Stainless steel mirror trim          Stainless steel heavy gauge top - 17" W          Designer white exterior rear          1" Boston Bumper Gray</p>
<p><b>INTERIOR</b>          Designer white interior ends          Stainless steel deck area around wells (for easy cleaning)          Wet or dry heated individual wells          Individual thermostatically controlled wells          Separate drain for each well          Flood lamp over each well</p>	<p><b>LIGHTING</b>          Individual heat lamps over each well          150W each</p>
<p><b>EXTERIOR</b>          Designer white exterior          Double pane rear removable doors          Newly designed compression door jamb          Heavy duty bright stainless steel top          Vented front minimizes moisture on glass</p>	<p><b>UL LISTED</b></p>

### ELECTRICAL REQUIREMENTS

Model #	Wells	Volts	Phase	AMPS
CHS35-4	3	120V/208V	1	3.8A/17.3A
		120V/240V	1	3.8A/20.0A
		120V/208V	3	3.8A/10.0A
		120V/240V	3	3.8A/11.6A
CHS35-6	4	120V/208V	1	5.0A/23.1A
		120V/240V	1	5.0A/26.7A
		120V/208V	3	5.0A/15.3A
		120V/240V	3	5.0A/17.6A
CHS35-8	6	120V/208V	1	7.5A/34.6A
		120V/240V	1	7.5A/40.0A
		120V/208V	3	7.5A/20.0A
		120V/240V	3	7.5A/23.1A



## 35 Series – Hot Food Case

### Technical Data

Model #	CHS35-4	CHS35-6	CHS35-8
Length	50"	71"	95"
Height	52"	52"	52"
Depth	35-1/2"	35-1/2"	35-1/2"
# of wells (Dimensions are +/- 1/4")	3	4	6
Voltage/Phase- Voltage-standard	120V/240V	120V/240V	120V/240
Phase	3	3	3
Amperage	3.8A/11.6A	5.0A/17.6A	7.5A/23.1A
Voltage-optional	120V/240V	120V/240V	120V/240
Phase	1	1	1
Amperage	3.8A/20.0A	5.0A/26.7A	7.5A/40.0A
Voltage-optional	120V/208V	120V/208V	120V/208
Phase	3	3	3
Amperage	3.8A/10.0A	5.0A/15.3A	7.5A/20.0A
Voltage-optional	120V/208V	120V/208V	120V/208
Phase	1	1	1
Amperage	3.8A/17.3A	5.0A/23.1A	7.5A/34.6A
Exterior color	White	White	White
Interior color	White	White	White
Deck area	Stainless steel	Stainless steel	Stainless steel
Floor	Aluminum	Aluminum	Aluminum
Top rear doors	2	2	4
Front viewing area	26"	26"	26"
Bottom storage	NO	NO	NO
Door Size	19-3/16"X19-3/16"	19-3/16"X29-1/2"	19-3/16"X19-3/16"

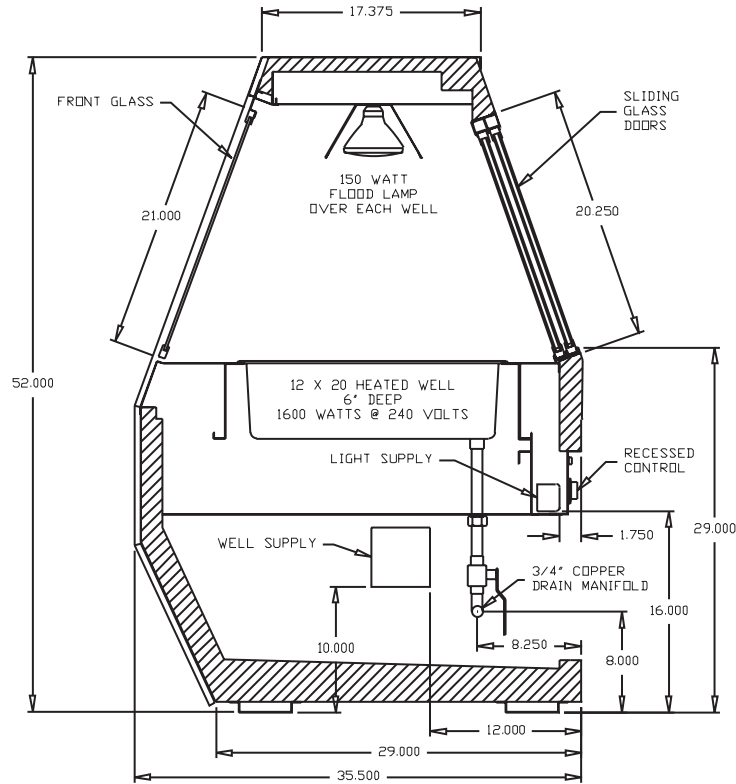
### SHIPPING INFORMATION

Height	58"	58"	58"
Depth	44"	44"	44"
Length	61"	87"	109"
Gross weight	450#	595#	850#
Cubic feet	90ft <sup>3</sup>	128ft <sup>3</sup>	164ft <sup>3</sup>

- Cases are designed to operate at 75 degrees Fahrenheit and 55% relative humidity
- Specification subject to change without notice

### Technical Data • Side View • Plan View

Cross Section



Size	L	R	C	D
4	50	25	25	33
6	71	9	18.250	45.875
8	95	9	18.250	57.875
10	119	9	18.250	69.875
12	143	9	18.250	81.875

Plan Views

