

### Combination Refrigerated Service Beside Non-Refrigerated Service Case



MODEL SHOWN: H5C5650LR

- H5C4850LR
- H5C4850RR
- H5C5650LR
- H5C5650RR
- H5C7450LR
- H5C7450RR

Lengths include end panels	
	50"L x 42"D x 51-1/4"H
	50"L x 42"D x 51-1/4"H
	58"L x 42"D x 51-1/4"H
	58"L x 42"D x 51-1/4"H
	76"L x 42"D x 51-1/4"H
	76"L x 42"D x 51-1/4"H

#### STANDARD FEATURES

- Breeze™ w/EnergyWise s/c refrigeration
- Clear glass shelves, lighted (LED)
- Compressor air rear intake, front discharge. Toe kick cannot be blocked
- Condensate pan (self-contained refig. only)
- Curved single pane, lift-up front glass w/o lock
- Integrated average product temperature of 40°F or less
- LED top & shelf lights
- LR = Refrigerated display customer left, RR = Refrigerated display customer right
- One year parts & labor; 5 year compressor warranty
- Shelving removable and adjustable on 1" centers

Features	Standard	Options
<b>EXTERIOR COLOR</b>	<input type="checkbox"/> Laminated (non-premium) Confirm pattern/grain direction	<input type="checkbox"/> Laminated (premium) Confirm pattern/grain direction <input type="checkbox"/> Stainless steel (includes rear of case)
<b>INTERIOR COLOR</b>	<input type="checkbox"/> Black	<input type="checkbox"/> Stainless steel <input type="checkbox"/> White
<b>REAR EXTERIOR COLOR</b>	<input type="checkbox"/> Painted - White	<input type="checkbox"/> Painted - Black <input type="checkbox"/> Stainless steel (w/stainless exterior only)
<b>TRIM COLOR</b>	<input type="checkbox"/> Black	<input type="checkbox"/> Silver
<b>BASE</b>	<input type="checkbox"/> Levelers	<input type="checkbox"/> 6"H legs <input type="checkbox"/> Casters (n/a with remote)
<b>END PANEL LEFT</b>	<input type="checkbox"/> Full end panel w/mirror interior	<input type="checkbox"/> Cutaway with glass <input type="checkbox"/> No end panel (for same case to case connect)
<b>END PANEL RIGHT</b>	<input type="checkbox"/> Full end panel w/mirror interior	<input type="checkbox"/> Cutaway with glass <input type="checkbox"/> No end panel (for same case to case connect)
<b>UPPER REAR</b>	<input type="checkbox"/> Clear glass rear sliding doors w/o lock	<input type="checkbox"/> Reflective glass rear sliding doors w/o lock
<b>ELECTRICAL CONNECT</b>	<input type="checkbox"/> 6' straight blade power cord (self-cont.)	<input type="checkbox"/> 6' locking power cord (self-cont.) <input type="checkbox"/> Electrical leads (remote)
<b>REFRIGERATION</b>	<input type="checkbox"/> Breeze™ w/EnergyWise s/c refrigeration	<input type="checkbox"/> Note: Remote doesn't incl Conds unit. Floor drain reqd. <input type="checkbox"/> Remote w/thermostat, solenoid & TXV
<b>MISCELLANEOUS</b>		<input type="checkbox"/> Front glass lock <input type="checkbox"/> Rear door lock <input type="checkbox"/> Second year parts & labor warranty (excludes compressor)

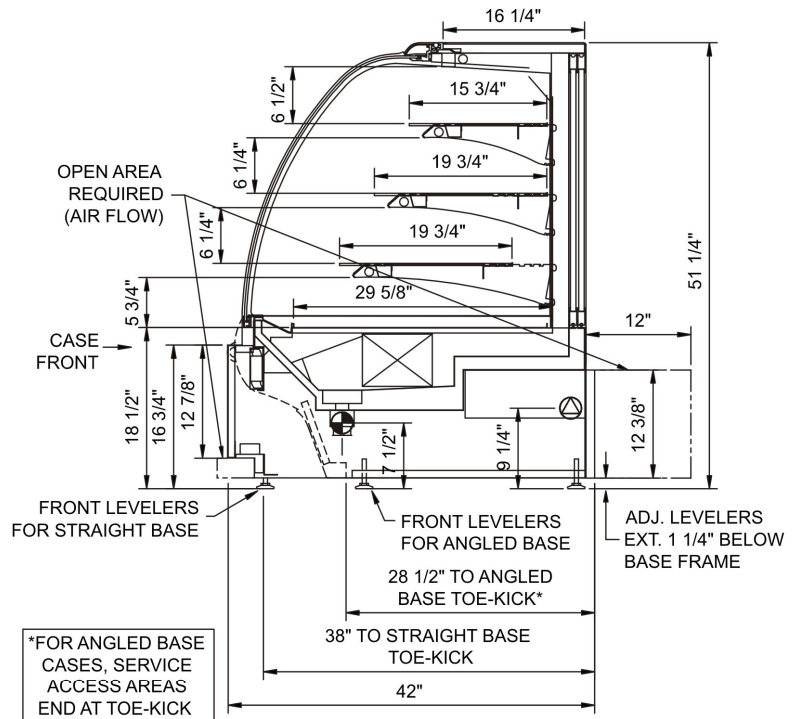
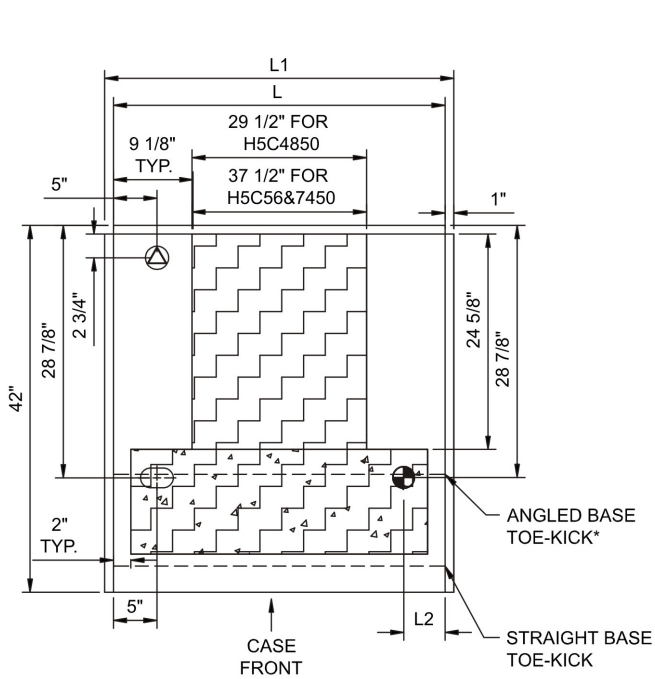
# Encore®

## Product Specifications

<b>Intended Environment:</b> Type I - Designed to operate in ambient conditions of 75°F with 55% relative humidity unless noted otherwise in system information below.		
<b>Zone</b>	<b>Intended Product To Be Displayed</b>	<b>Integrated Prod Temp ° F</b>
All	Unpackaged refrigerated products	40

PLAN VIEW

SIDE VIEW



NOTE: ALL DIMENSIONS APPROXIMATE

- ELECTRICAL JUNCTION BOX (SUPPLIED WITH 6" LEADS OR POWER CORD).
- REMOTE FLOOR SINK & UTILITIES ACCESS AREA.
- LOCATION OF DRAIN TUBE FOR REMOTE REF. ONLY (SUPPLIED WITH 3/4" OR 1 1/2" PVC TUBE).
- SELF-CONTAINED CASE SERVICE ACCESS AREA.
- REFRIGERATION LINE CONNECTION.
- DRY CASE SERVICE ACCESS AREA.

Model Technical Specifications															
Model	L"	L1"	L2"	System Circuit Volts			Phs	Freq	Amps ***	Watts	Wires	NEMA Plug	SST	BTUH	Est Wt
H5C4850LR	N/A	50.00	13.00	Remote(Type I)	Circuit #1	110-120	1	60	2.62	207	2+G	Leads Multiple	20.00	1412	900
				Self-Contained	Circuit #1	110-120	1	60	10.72	763	2+G	5-15P or L5-15P	N/A	N/A	
H5C4850RR	N/A	50.00	13.00	Remote(Type I)	Circuit #1	110-120	1	60	2.62	207	2+G	Leads Multiple	20.00	1412	900
				Self-Contained	Circuit #1	110-120	1	60	10.72	763	2+G	5-15P or L5-15P	N/A	N/A	
H5C5650LR	N/A	58.00	13.00	Remote(Type I)	Circuit #1	110-120	1	60	2.70	232	2+G	Leads Multiple	20.00	1655	1,050
				Self-Contained	Circuit #1	110-120	1	60	10.80	788	2+G	5-15P or L5-15P	N/A	N/A	
H5C5650RR	N/A	58.00	13.00	Remote(Type I)	Circuit #1	110-120	1	60	2.70	232	2+G	Leads Multiple	20.00	1655	1,050
				Self-Contained	Circuit #1	110-120	1	60	10.80	788	2+G	5-15P or L5-15P	N/A	N/A	
H5C7450LR	N/A	76.00	13.00	Remote(Type I)	Circuit #1	110-120	1	60	2.28	236	2+G	Leads Multiple	20.00	2069	1,250
				Self-Contained	Circuit #1	110-120	1	60	10.38	792	2+G	5-15P or L5-15P	N/A	N/A	
H5C7450RR	N/A	76.00	13.00	Remote(Type I)	Circuit #1	110-120	1	60	2.28	236	2+G	Leads Multiple	20.00	2069	1,250
				Self-Contained	Circuit #1	110-120	1	60	10.38	792	2+G	5-15P or L5-15P	N/A	N/A	

\*\*\* Does not include electric defrost on freezer models.

**Regulatory Approvals:**

All Models	Accordance with AHRI Std 1200 ETL Listed to UL 471 ETL Listed to CAN/CSA 22.2 No. 120 ETL Sanitation to NSF 7
------------	--

**Important Notes:**

- 1) ELECTRICAL NOTE: If GFCI is required, a GFCI breaker MUST be used in lieu of a GFCI receptacle
- 2) 43" Minimum door entry clearance required (without shipping skid).
- 3) Compressor air rear intake, front discharge. Toe kick cannot be blocked.
- 4) Units are supplied with levelers. They must be adjusted during installation to ensure the unit is level and plumb. Dimensions reflect levelers extended 1 1/4".

